

Division of Graduate Studies



Yong Loo Lin
School of Medicine

Contact Details

* Main contact

Effective date: 1 August 2024-31 July 2025



Admin Lead

Geetha Warriar
6601 2083
geetha@nus.edu.sg



Admission Scholarships Lab Rotation



Yumi Li Cuiyu*
6601 2115
yumili@nus.edu.sg

Lim Chia Huei
6601 2104
chiahuei@nus.edu.sg

Geetha Warriar
6601 2083
geetha@nus.edu.sg

Course Registration Coursework Matters

Lim Chia Huei*
6601 2104
chiahuei@nus.edu.sg

Suriani Rabu
medv3308@visitor.nus.edu.sg



Candidature Matters

General Enquiries, Change of Thesis Title,
Conversion of Candidature, RS Leave, LOA,
Add / Change Thesis Advisor

Lim Chia Huei*
6601 2104
chiahuei@nus.edu.sg

Mallika w/o Raguraman
6772 4380
mallikar@nus.edu.sg

Siti Maryam Binte Masnor
6601 5639
siti.mm@nus.edu.sg



Thesis Advisory Committee (TAC) Matters

Siti Maryam Binte Masnor*
6601 5639
siti.mm@nus.edu.sg

Chou Loi Choo
6516 3265
phcchou@nus.edu.sg



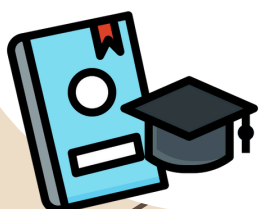
PhD Qualifying Examination (PQE) Matters Thesis submission, Examination Matters

Fatin Umairah Bte
Md. Ali 6516 3245
bchfuma@nus.edu.sg

Siti Maryam Binte Masnor
6601 5639
siti.mm@nus.edu.sg

Mallika w/o Raguraman
6772 4380
mallikar@nus.edu.sg

Chou Loi Choo
6516 3265
phcchou@nus.edu.sg



Graduate Assistance Programme (GAP)

Siti Maryam Binte Masnor*
6601 5639
siti.mm@nus.edu.sg

Lim Chia Huei
6601 2104
chiahuei@nus.edu.sg



Industry Experiential Internship (IEI)



Lim Chia Huei*
6601 2104
chiahuei@nus.edu.sg

Yumi Li Cuiyu
6601 2115
yumili@nus.edu.sg

6-monthly Research Progress Report (RPR)

Lim Seow Ping, Michael*
6772 7545
medlspm@nus.edu.sg

Siti Maryam Binte Masnor
6601 5639
siti.mm@nus.edu.sg

Chou Loi Choo
6516 3265
phcchou@nus.edu.sg



Student Research Assistant (SRA) Scheme / Short-Term Work (STW) Scheme



Siti Maryam Binte Masnor*
6601 5639
siti.mm@nus.edu.sg

Lim Chia Huei
6601 2104
chiahuei@nus.edu.sg

Student Support Crisis Management

Geetha Warriar
6601 2083
geetha@nus.edu.sg



We are dedicated to providing the best quality, value and service!