

Division of Graduate Studies



Yong Loo Lin
School of Medicine

Contact Details

* Main contact

Effective date: 1 August 2023-31 July 2024



Admin Lead

Geetha Warriar
6601 2083
geetha@nus.edu.sg



Admission Scholarships Lab Rotation



Yumi Li Cuiyu*
6601 2115
yumili@nus.edu.sg

Lim Chia Huei
6601 2104
chiahuei@nus.edu.sg

Geetha Warriar
6601 2083
geetha@nus.edu.sg

Course Registration Coursework Matters

Lim Chia Huei*
6601 2104
chiahuei@nus.edu.sg

Geetha Warriar
6601 2083
geetha@nus.edu.sg



Tan Mui Yee (AP Badges)
6516 7403
myee@nus.edu.sg

Candidature Matters

General Enquiries, Change of Thesis Title,
Conversion of Candidature, RS Leave, LOA,
Add / Change Thesis Advisor



Lim Chia Huei
6601 2104
chiahuei@nus.edu.sg

Mallika w/o Raguraman
6772 4380
mallikar@nus.edu.sg

Siti Maryam Binte Masnor
6601 5639
siti.mm@nus.edu.sg

Thesis Advisory Committee (TAC) Matters

Siti Maryam Binte Masnor*
6601 5639
siti.mm@nus.edu.sg

Chou Loi Choo
6516 3265
phcchou@nus.edu.sg



PhD Qualifying Examination (PQE) Matters Thesis submission, Examination Matters

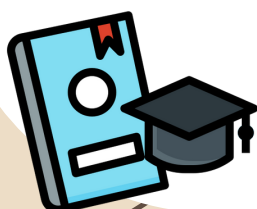
Fatin Umairah Bte
Md. Ali 6516 3245
bchfuma@nus.edu.sg

Siti Maryam Binte Masnor
6601 5639
siti.mm@nus.edu.sg

Lim Chia Huei
6601 2104
chiahuei@nus.edu.sg

Mallika w/o Raguraman
6772 4380
mallikar@nus.edu.sg

Chou Loi Choo
6516 3265
phcchou@nus.edu.sg



Conference Funding Reimbursements



Kho Teck Kheng*
6601 2125
medkhotk@nus.edu.sg

Geetha Warriar
6601 2083
geetha@nus.edu.sg

Graduate Assistance Programme (GAP)

Siti Maryam Binte Masnor*
6601 5639
siti.mm@nus.edu.sg

Lim Chia Huei
6601 2104
chiahuei@nus.edu.sg



Industry Experiential Internship (IEI)



Yumi Li Cuiyu*
6601 2115
yumili@nus.edu.sg

Geetha Warriar
6601 2083
geetha@nus.edu.sg

6-monthly Research Progress Report (RPR)

Lim Seow Ping, Michael*
6772 7545
medlspm@nus.edu.sg

Siti Maryam Binte Masnor
6601 5639
siti.mm@nus.edu.sg

Chou Loi Choo
6516 3265
phcchou@nus.edu.sg



Student Research Assistant (SRA) Scheme / Short-Term Work (STW) Scheme



Siti Maryam Binte Masnor*
6601 5639
siti.mm@nus.edu.sg

Geetha Warriar
6601 2083
geetha@nus.edu.sg

Student Support Crisis Management

Geetha Warriar
6601 2083
geetha@nus.edu.sg



We are dedicated to providing the best quality, value and service!