



Division of Graduate Medical Studies
Yong Loo Lin School of Medicine

Navigating Medical Law and Ethics in the Current and Future Landscape



MONDAY, 4 MARCH 2024 8.45AM – 6.00PM

REGISTER BY 12 FEB



Venue: NUS, MD11, MD11-01-01, Clinical Research Centre (CRC) Auditorium

Programme Code: TGS-2020507533 (SSG-Approved Course)

Organised by the NUS Yong Loo Lin School of Medicine, Division of Graduate Medical Studies and the National University Hospital Patient Relations Department, this one-day course seeks to refresh and update healthcare professionals with a current understanding of medical law and statutes. These involve ethical and legal considerations affecting clinical care practices in a developing litigious landscape.

The primary outcome of this course is to achieve higher-order critical thinking skills (thought leadership) towards enhanced risk management capabilities of healthcare professionals.

MINIMUM ENTRY REQUIREMENTS

**CME/CPE points will be awarded to doctors and nurses*

This course is targeted towards hospital specialists and generalists, primary care physicians in polyclinics, general practitioners, clinical pharmacists and registered nurses.

TESTIMONIALS FROM PAST PARTICIPANTS

"A useful course that all clinicians should take. From the course, I am more aware of potential pitfalls and what I can do to better protect myself and my patients."

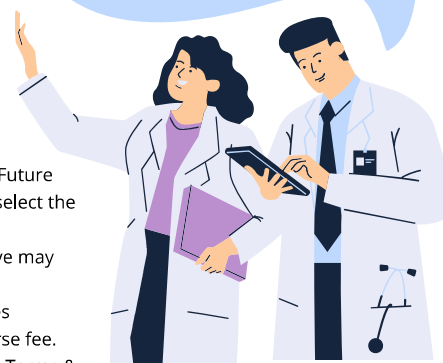
- Dr Jinnie Pang, KKH

"The course brought life to medicolegal and ethical principles by incorporating an excellent range of examples over the past two decades from local and overseas cases. The speakers' rich personal experiences also gave a valuable first-hand slant to the teaching materials."

- Dr Adrian Loh, MINDEF

Learners must record at least 75% attendance and pass all assessment components to successfully complete the course and receive a Certificate of Participation.

1. All self-sponsored Singaporeans aged 25 and above can use their SkillsFuture Credit to pay for the course. Visit the [SkillsFuture Credits website](#) to select the course.
2. Mid-Career Enhanced Subsidy (MCES) - Singaporeans aged 40 and above may enjoy subsidies up to 90% of the course fee.
3. Enhanced Training Support for SMEs (ETSS) - SME-sponsored employees (Singapore Citizens and PRs) may enjoy subsidies up to 90% of the course fee.
4. Long Term Visit Pass+ (LTVP+) Holders are also eligible for SSG funding. Terms & Conditions Apply.



Learn More

[Scan the QR code or click to visit the course webpages](#)

Send An Enquiry

nusmedcet@nus.edu.sg



*Disclaimers to note:

- Please note that the scheduled course run will proceed only if the minimum class size is met.
- In the case where there are any unforeseen circumstances or minimum class size is not met, NUSMed Edu-CET team reserves the right to cancel the class without prior notice.
- Photographs and film footages may be captured during the course for future publicity and archival purposes.