

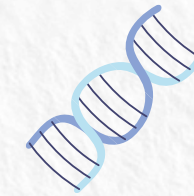


NUHS Clinician  
Scientist Academy

# CS Academy Yearbook 2024



# Table of Contents



## **THE NUHS CS ACADEMY**

Our Team & CS Academy Council.....	1
3-Pronged Approach .....	2
2024 CS Numbers: 236 .....	3
2024 Adventures .....	4

## **SUPPORT**

Collaborative Research Grant .....	5
ExxonMobil-NUS Research Fellowship ....	10
NCSP 2.0 .....	11
Research Concierge .....	13
Research Support Unit (RSU) .....	15

## **ENABLE**

CS Spotlight .....	20
CS Academy Workshops .....	21
Saturday Research Trainings .....	23

## **NURTURE**

Networking Sessions .....	24
Focus Group Engagement.....	25
CS Academy Retreat .....	27

## **OTHERS**

NMRC Open Fund - LCG .....	29
MOE Tier 3 .....	30
NUHS Publications .....	31
2024 Looking Into 2025 .....	37
Message .....	44

INTRODUCING OUR COUNCIL MEMBERS



**PROF MICHAEL CHEE**  
NMRC STaR Award  
Sleep and Neuroscience



**A/PROF CHRISTOPHER CHEN**  
NMRC STaR Award  
Neuroscience



**PROF ROGER FOO**  
CSA Senior Investigator Award  
Cardiology



**A/PROF NG SIOK BIAN**  
CSA Senior Investigator Award  
Pathology



**PROF LIM SENG GEE**  
CSA Senior Investigator Award  
Gastroenterology & Hepatology



**A/PROF LUO NAN**  
HPHSR Clinician Scientist Award (Senior)  
SSHSPH



**A/PROF SHEFALY SHOREY**  
HPHSR Clinician Scientist Award (Senior)  
Nursing



**A/PROF CITRA MATTAR**  
CSA Investigator Award  
Obstetrics & Gynaecology



**A/PROF SU XINYI**  
CSA Investigator Award  
Ophthalmology



**A/PROF CHUA HORNG RWEY**  
Clinician Innovator Award  
Nephrology



**DR KAAH HUNG LENG**  
Clinician Innovator Award  
General Surgery



**DR THAM YIH CHUNG**  
HPHSR Clinician Scientist Award (Investigator)  
Ophthalmology & Optometry



**DR AMANDA CHAN**  
Transition Award  
Neurology



**DR MO YIN**  
Transition Award  
Infectious Diseases



**DR DEDRICK CHAN**  
NMRC Research Training Fellow  
Colorectal Surgery



**DR SHAWN LEE**  
NMRC Research Training Fellow  
Pediatrics

# The CS Academy Team



APPOINTED HEAD IN JULY 2024  
**A/PROF CATHERINE ONG**



**SENIOR MANAGER  
MS. ELAINE TAN**



**SR. ASST. MANAGER  
MS. APRIL SIM**



**ASST. MANAGER  
MS. WEE YU TING**



**SR. ASST. MANAGER  
MS. JASMINE YONG**



**SENIOR EXECUTIVE  
MR. DEREK CHAN**



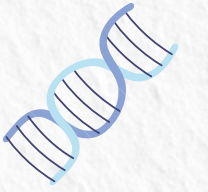
**MANAGEMENT ASST. OFFICER  
MS. RAFIKA BINTE SENAN**



Welcome TO THE TEAM
   
**A/PROF CATHERINE ONG (HEAD, CS ACADEMY)**
  
 thank you
   
 FOR YOUR CONTRIBUTION
   
 PROF ROGER FOO & A/PROF SU XINYI



# Our 3-Pronged Approach



## SUPPORT

- **Grant funding**
  - ExxonMobil-NUS Research Fellowship
  - NCSP 2.0
  - Collaborative Research Grant (Medicine + X)
    - NUS COM
    - NUS CDE
    - NUS FASS
- **Research Concierge**
- **Research Support Unit (RSU)**

*Provide research grants to support young talents with funding to embark on their research and build their research portfolio. RSU provides professional support for biostatistics, systematic review, medical & scientific communication and scientific illustration. Research concierge provides administrative support and guidance to pipeline clinician scientists.*

## ENABLE

- **Skills Equip**
  - Sat Training Series
  - Workshop / Seminars
- **Exposure to wet-lab**
  - Research Try out
- **Resources**
  - CS Guidebook
  - CS Spotlight
  - Yearbook
  - NUHS Collaborative Resource

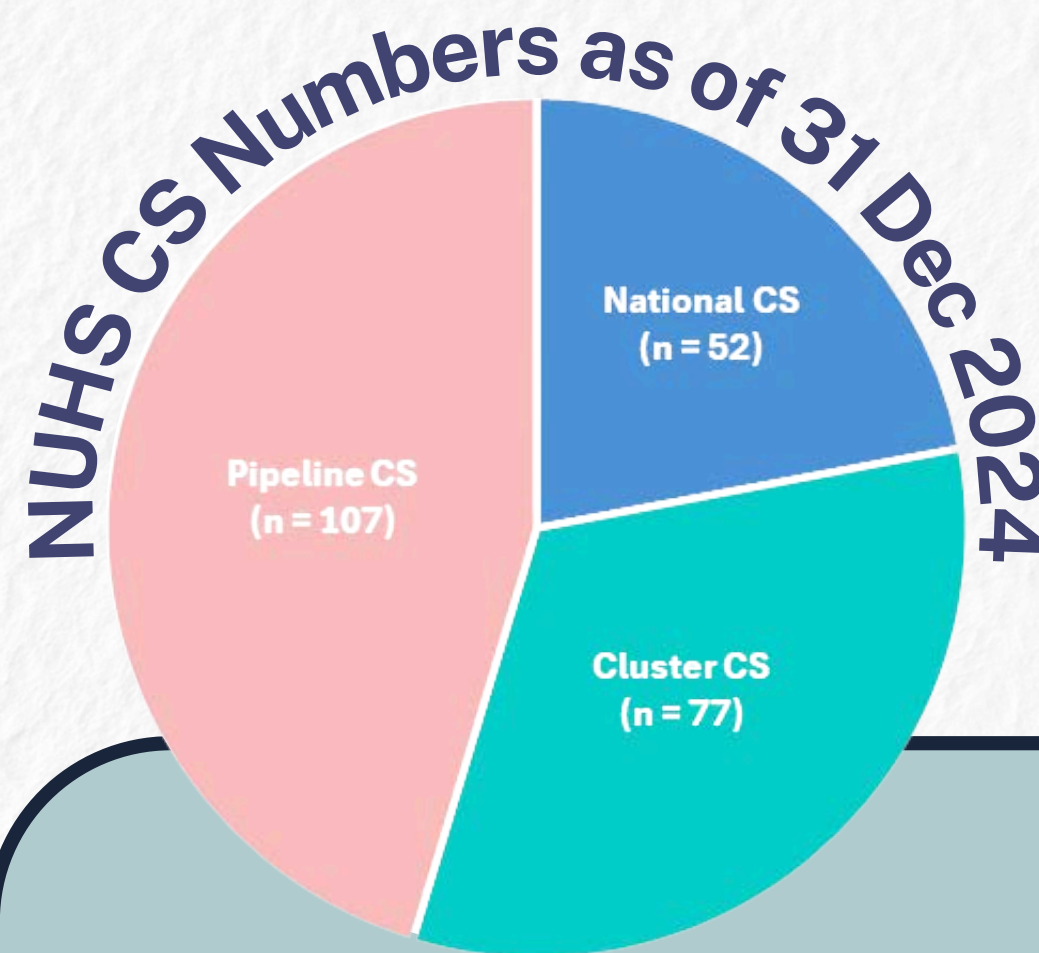
*Conducts regular talks and workshops to train and equip our young clinician scientist with the knowledge and skills on a wide range of topics to enhance their research capabilities. Nurturing clinician scientists to progress in their research career in the future world research.*

## NURTURE

- **Networking sessions**
  - NUHS Clinician Scientist Evening
  - Outreach Roadshows
  - Residency Open House
- **Focus Group Engagement**
  - Head of Department
  - Data Engagement
  - National Clinician Scientists
  - Non-clinical Assistant Professors
  - NCSP Awardees

*Provides a forum for young and experience clinician scientists to network. Meet and Greet sessions provides dialogue platform for young clinician scientists to seek wisdom and be inspired by giants of the field. Dialogue sessions allows clinician scientist to seek guidance and share experiences.*

# 2024 CS Numbers: 236



CS Definition	
<b>National CS</b>	Ongoing PIs of NMRC Human Capital Awards (STaR, CSA, HCSA, CIA).
<b>Cluster Clinician Researchers</b>	
<b>Ongoing Independent clinician PIs</b>	<p>Not ongoing PIs of NMRC Human Capital Awards (STaR, CSA, HCSA, CIA), and meet <b>all the following criteria:</b></p> <ol style="list-style-type: none"> <li>Holds a MD/MBBS/BDS (for a doctor/dentist) or is a Healthcare/Health Science Professional*.</li> <li>Ongoing independent PI of at least 1 national/international grant of IRG-level (e.g. CS IRG, HSRG, NHIC I2D) or has funding from private (e.g. industry funding) / philanthropic sources.                             <ul style="list-style-type: none"> <li>The grant should not be TA, NIG, YIRG or equivalent level of award.</li> <li>Ongoing PIs of NMRC grants under the following programmes can be included:                                     <ol style="list-style-type: none"> <li>CS Individual Research Grant (CS IRG)</li> <li>Clinical Trial Grant (CTG)</li> <li>COVID-19 Research Fund</li> <li>Health Services Research Grant (HSRG)</li> <li>Population Health Research Grant (PHRG)</li> <li>National Innovation Challenge on Active and Confident Ageing (NIC Ageing)</li> <li>Open Fund - Individual Research Grant (OF IRG)</li> <li>Open Fund - Large Collaborative Grant (OF LCG) - to include corresponding PIs and Theme PIs</li> </ol> </li> </ul> </li> </ol>
<b>Cluster Designated CS</b>	<p>Holds a MD/MBBS/BDS (for a doctor/dentist) or is a Healthcare or Health Science Professional and belong to the following:</p> <ol style="list-style-type: none"> <li>Leads, Theme and Core PIs of centre grants</li> <li>NUH top 10% for research index (publication and/or grant performance) &amp; NUS EX grading for research - 3 out of 3 years (This includes Clinicians from NUH and NUS who are in the top 10% for 3 consecutive years)</li> </ol>

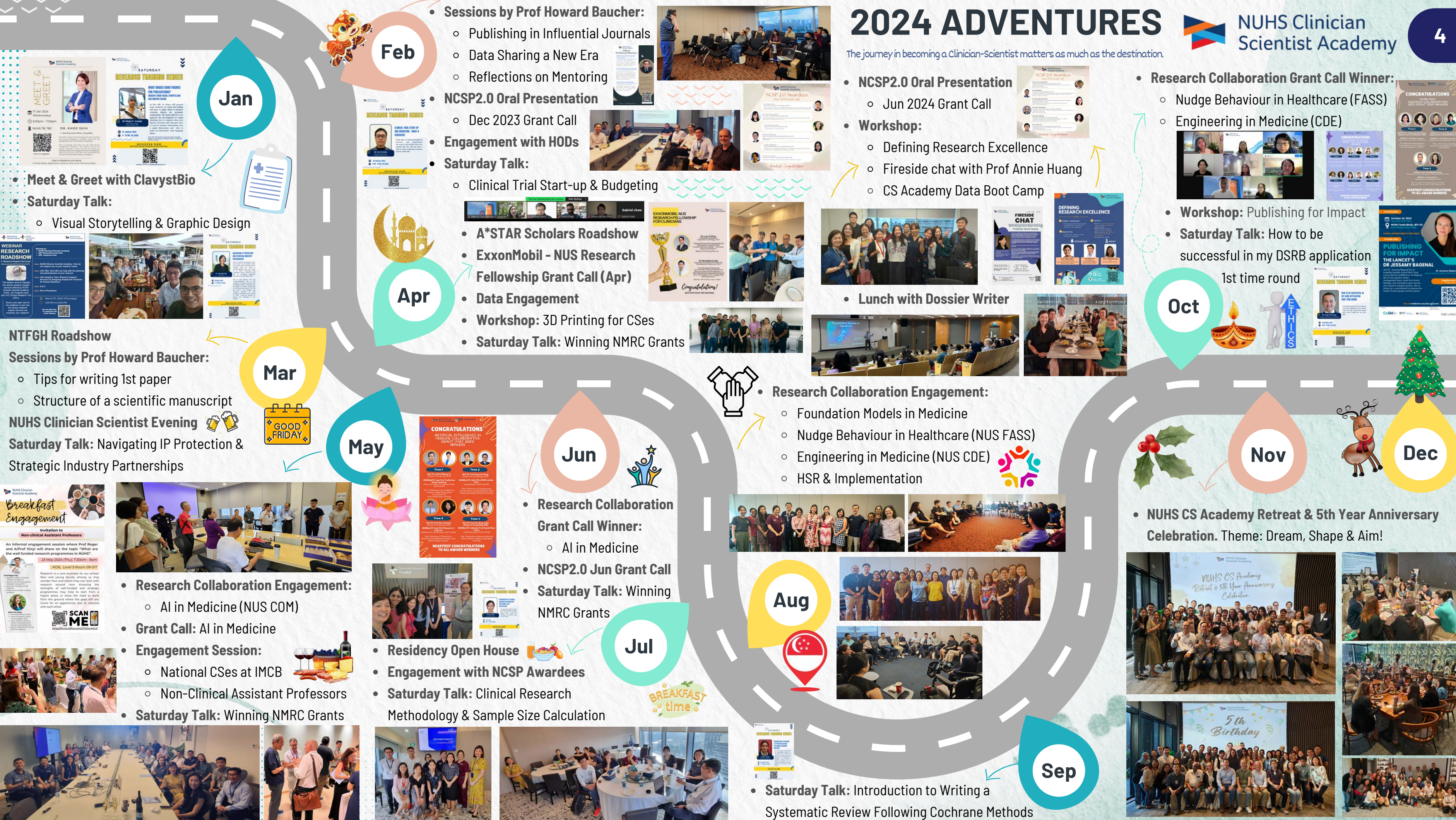
CS Definition	
<b>CS Pipeline</b>	
<b>NMRC-Supported CS Pipeline</b>	Ongoing recipients of TA, CIDA, NMRC RTF and CS Residents
<b>Cluster-Support CS Pipeline</b>	<p>Not ongoing recipient of NMRC Talent Awards (STaR, CSA, HCSA, CIA, TA, CIDA, NMRC RTF or CS residency) or already listed as a Cluster Clinician Researcher, and meet all the following criteria:</p> <ol style="list-style-type: none"> <li>Holds a MD/MBBS/BDS (for a doctor/dentist) or Healthcare/Health Science Professionals*.</li> <li>Undergoing or completed formal research training typically not exceeding 8 years and identified by cluster/medical school to be groomed as CS</li> </ol>

\* Healthcare/Health Science Professionals - Nurses, Pharmacists, and Allied Health Professionals (AHPs) who are in clinical practice, doing research in clinical settings or doing research with clinical and healthcare applications/relevance. Ref. MOH website for the list of AHPs: <https://www.moh.gov.sg/hpp/allied-health-professionals/career-practices/CareerNPracticesDetails/allied-health-professions>



# 2024 ADVENTURES

The journey in becoming a Clinician-Scientist matters as much as the destination.



**Jan**

- **Meet & Greet with ClavystBio**
- **Saturday Talk:**
  - Visual Storytelling & Graphic Design



- **NTFGH Roadshow**
- **Sessions by Prof Howard Baucher:**
  - Tips for writing 1st paper
  - Structure of a scientific manuscript
- **NUHS Clinician Scientist Evening**
- **Saturday Talk:** Navigating IP Protection & Strategic Industry Partnerships



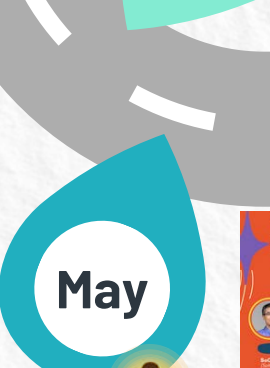
- **Research Collaboration Engagement:**
  - AI in Medicine (NUS COM)
- **Grant Call:** AI in Medicine
- **Engagement Session:**
  - National CSes at IMCB
  - Non-Clinical Assistant Professors
- **Saturday Talk:** Winning NMRC Grants



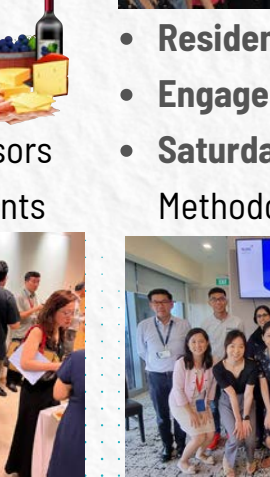
**Feb**



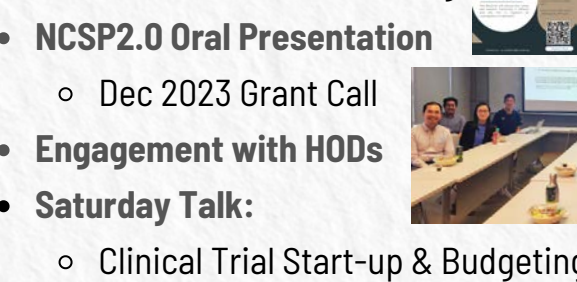
**Apr**



**May**



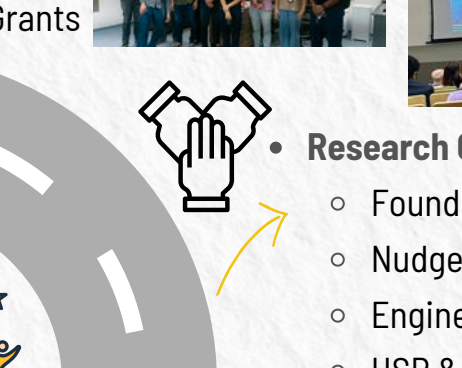
- **Sessions by Prof Howard Baucher:**
  - Publishing in Influential Journals
  - Data Sharing a New Era
  - Reflections on Mentoring
- **NCSP2.0 Oral Presentation**
  - Dec 2023 Grant Call
- **Engagement with HODs**
- **Saturday Talk:**
  - Clinical Trial Start-up & Budgeting



- **A\*STAR Scholars Roadshow**
- **ExxonMobil - NUS Research Fellowship Grant Call (Apr)**
- **Data Engagement**
- **Workshop:** 3D Printing for CSes
- **Saturday Talk:** Winning NMRC Grants



- **Research Collaboration Engagement:**
  - Foundation Models in Medicine
  - Nudge Behaviour in Healthcare (NUS FASS)
  - Engineering in Medicine (NUS CDE)
  - HSR & Implementation



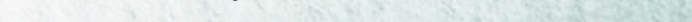
- **NCSP2.0 Oral Presentation**
  - Jun 2024 Grant Call
- **Workshop:**
  - Defining Research Excellence
  - Fireside chat with Prof Annie Huang
  - CS Academy Data Boot Camp



- **Lunch with Dossier Writer**



- **Saturday Talk:** Introduction to Writing a Systematic Review Following Cochrane Methods



- **Research Collaboration Grant Call Winner:**
  - Nudge Behaviour in Healthcare (FASS)
  - Engineering in Medicine (CDE)
- **Workshop:** Publishing for Impact
- **Saturday Talk:** How to be successful in my DSRB application



- **NUHS CS Academy Retreat & 5th Year Anniversary Celebration.** Theme: Dream, Shape & Aim!





## NUHS RESEARCH COLLABORATIONS



Calling all clinicians, nurses and allied health professionals!!

The NUHS Clinician Scientist Academy is holding upcoming engagement sessions for you to meet selected professors from the School of Computing, Engineering and Social Sciences. This is in effort to set up new research collaborations, forge meaningful connections and unlock new opportunities. Attendance to these sessions will also offer a chance for seed grant funding. Fill in the form to express your interest now.

*Note that places at these events are by necessity limited. Expression of interest will not guarantee a place.*

### ENGAGEMENT SESSION THEME

*[With NUS School of Computing]*

1. MedTech-AI (End April 2024)

*[With NUS College of Design and Engineering]*

2. MedTech-Imaging, Devices & Sensors (August 2024)

3. MedTech-Digital (August 2024)

*[With NUS Faculty of Arts & Social Sciences]*

4. Nudging Behavior in Healthcare (August 2024)

5. Health Services Research & Implementation (August 2024)



Contact us:  
cs\_academy@nus.edu.sg



## WOULD YOU LIKE TO MEET NEW COLLABORATORS

Keen to find new collaborators for your research?

Keen to network with other clinician scientists, engineers or scientists?

The CS Academy is collating a list to facilitate research collaboration and matching. We will make this list available to external collaboration opportunities widely.

Don't miss out on this opportunity. Fill in the form now by scanning the QR code!



SCAN ME

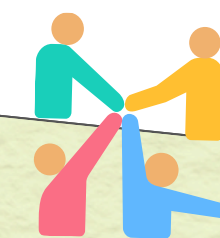


Contact Us: cs\_academy@nus.edu.sg

Engagement Session with NUS/NUHS Nursing & Allied Health Professional



Health Service Research & Implementation  
Thursday, 08 August 2024  
NUHS Tower Block T09-03/04



The engagement session facilitates network with AHP and nursing colleagues as potential collaborators for the NUHS Seed Fund-HPHSR, for a quantum of up to \$250,000 for 3 years.



SCHOOL OF COMPUTING

2024  
AUG 07

FACULTY OF ARTS & SOCIAL SCIENCES

2024  
AUG 08

WITH CLINICIANS, NURSES & ALLIED HEALTH PROFESSIONALS

ENCOURAGE NEW COLLABORATIVE PARTNERSHIPS & FOSTER NEW HIGH IMPACT RESEARCH OUTCOMES

2024  
AUG 15

2024  
MAY 08

NUHS Clinician Scientist Academy

MEDICINE + X

2024  
AUG 14

COLLEGE OF DESIGN & ENGINEERING



## Engagement Session with NUS School of Computing



MedTech-AI  
Wednesday, 8 May 2024  
MD6 13-02-N

### Artificial Intelligence in Medicine Grant Call

<b>Quantum</b>	\$100K - 200K per project (50/50 split for projects with CDE Engineers)
<b>Duration</b>	2 years (1 August 2024 - 31 July 2026)
<b>Eligibility</b>	<ul style="list-style-type: none"> <li>NUS or NUHS clinicians, nurses, AHPs (listed on MOH's website) who have received in-depth scientific training through a PhD programme, Masters programme, or at least 2 years post-doctoral intensive research experience.</li> <li>PIs must have a primary appointment in and salaried by NUHS entities. Lead PI must be in Singapore at least 75% of the time during the grant period.</li> </ul>
<b>Deliverables</b>	<ul style="list-style-type: none"> <li>Outcomes of either:                             <ul style="list-style-type: none"> <li>applying for national level grant, or</li> <li>clinical implementation or innovation</li> </ul> </li> <li>For PIs without PhD, successful enrollment to PhD within 5 years after grant end.</li> <li>Invention disclosure within 3 years after grant end.</li> </ul>

NUHS entities comprise of NUSMed, NUH, FOD, SSHSPH, AH, NTFGH, JCH, JMC & NUP



## CONGRATULATIONS

ARTIFICIAL INTELLIGENCE IN MEDICINE COLLABORATIVE GRANT (MAY 2024) WINNERS



### Team 1

**SoC PI: A/Prof Wang Ye**  
(School of Computing, NUS)

**NUSMed PI: Asst Prof Catherine Dong Yanhong**  
(Alice Lee Centre for Nursing Studies, NUSYLLSOM)

Title: Validating an AI enabled co-creation songwriting system CoLyricist for post-stroke brain training



### Team 3

**SoC PI: Prof Xiao Xiaokui**  
(School of Computing, NUS)

**NUSMed PI: Asst Prof Queenie Li Ling-Jun**  
(Obstetrics & Gynaecology, NUSYLLSOM)

Title: Unlocking AI Potential to Revolutionize Systematic Review and Meta-Analysis Search



### Team 2

**SoC PI: Prof Dong Jin Song**  
(School of Computing, NUS)

**NUSMed PI: Adj A/Prof Will Loh Ne-Hooi**  
(Anaesthesia, NUSYLLSOM)

Title: Prediction of Postoperative Complications and Readmission Risks Using explainable Machine Learning



### Team 4

**SoC PI: Prof Ooi Beng Chin**  
(School of Computing, NUS)

**NUSMed PI: Adj Asst Prof David Chen Ziyou**  
(Ophthalmology, NUSYLLSOM)

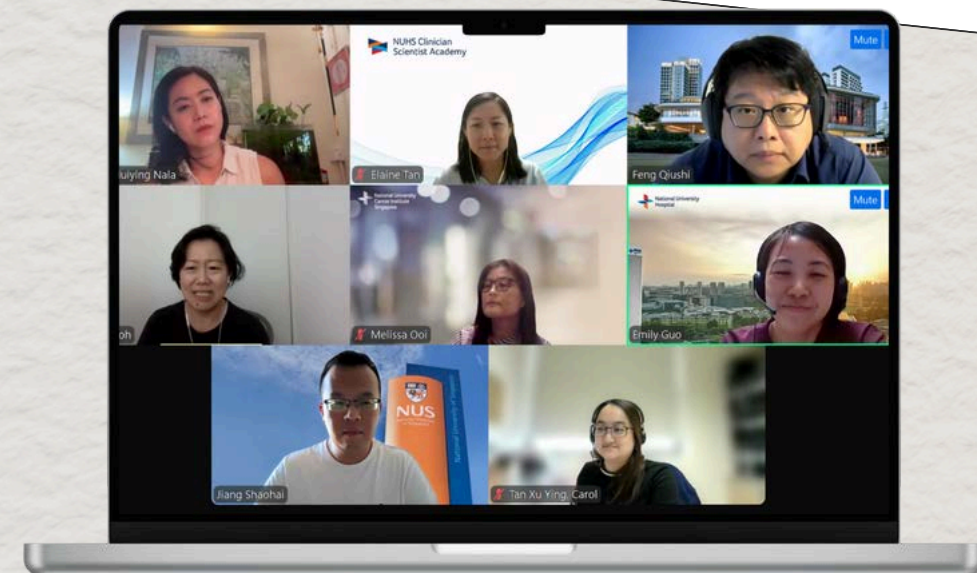
Title: Intraocular pressure prediction after cataract surgery using deep learning

HEARTIEST CONGRATULATIONS TO ALL AWARD WINNERS

## Engagement Session with NUS Faculty of Arts & Social Sciences

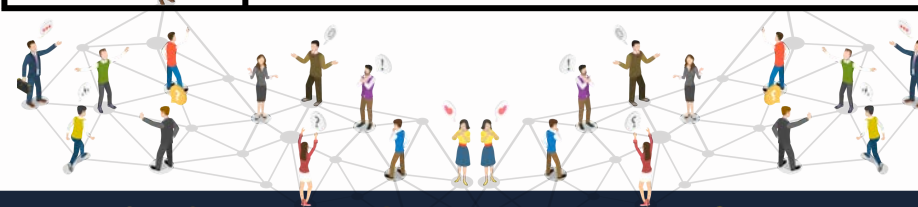


Nudge Behaviour in Healthcare  
Wednesday, 07 August 2024  
NUHS Tower Block T07-03



### NUHS-FASS Research Collaboration Seed Grant

<b>Quantum</b>	Each approved project can be funded for up to \$80,000.
<b>Duration</b>	Project duration shall be up to 18 months.
<b>Eligibility</b>	<p><u>NUHS PI/Co-PI:</u></p> <ul style="list-style-type: none"> <li>NUS or NUHS clinicians, nurses, AHPs who have received in-depth scientific training through a PhD programme, Masters programme, or at least 2 years post-doctoral intensive research experience. PIs must have a primary appointment in and salaried by NUHS entities. PI must be in Singapore at least 75% of the time during the grant period.</li> </ul> <p><u>FASS PI/Co-PI:</u></p> <ul style="list-style-type: none"> <li>PI /Co-PI must be full-time tenure-track faculty staff, Educator Track [Lecturers, Senior Lecturers and Associate Professors (Educator Track)], Practice Track, Research Track (tenured) and Research Track (Senior Research Fellows and above). PIs and Co-PIs must hold at least 75% appointment and perform duties at NUS for a minimum of 9 months a year and their contract term should exceed the project duration.</li> </ul>
<b>Deliverables</b>	<ul style="list-style-type: none"> <li>Outcomes of either:                             <ul style="list-style-type: none"> <li>applying for national level grant, or</li> <li>clinical implementation or innovation</li> </ul> </li> <li>For PIs without PhD, successful enrollment to PhD within 5 years after grant end.</li> <li>Invention disclosure within 3 years after grant end.</li> </ul>



## CONGRATULATIONS

### NUHS-FASS RESEARCH COLLABORATION SEED GRANT 2024 WINNERS



#### Team 1

**NUHS PI: Dr Aishworiya Ramkumar**  
Department of Paediatrics

**FASS PI: Dr Shan Xiaoyue**  
Department of Economics

Title: Behavioral Interventions to Encourage Early Autism Diagnosis among Singaporean Children



#### Team 2

**NUHS PI: Asst. Prof Wong Su Ren**  
Department of Rehabilitation

**FASS PI: Prof Elaine Lynn-Ee Ho**  
Department of Geography

Title: C-PICS study: Examining Community Participation of Intensive Care Survivors



#### Team 3

**FASS PI: Asst. Prof Shaohai Jiang**  
Department of Communications & New Media

**NUHS PI: Dr Emily Guo**  
Department of Rehabilitation

Title: Towards Communicatively Accessible Hospitals: Patient and Provider Perspectives



**HEARTIEST CONGRATULATIONS TO ALL AWARD WINNERS**

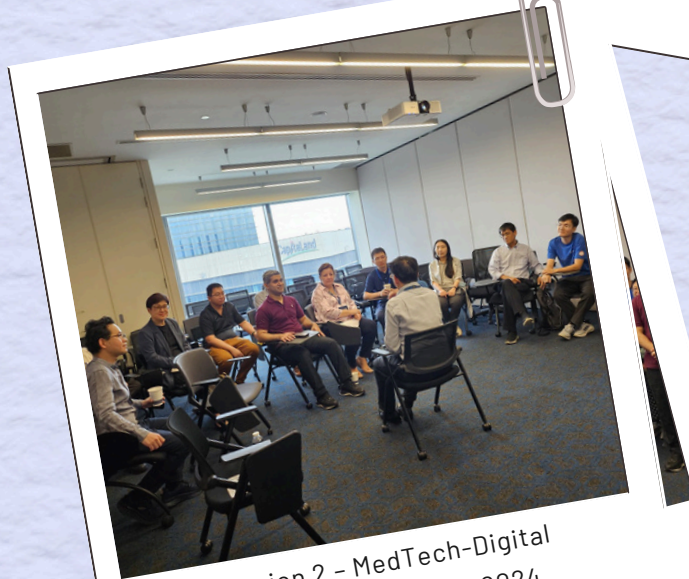
## Engagement Session with College of Design & Engineering



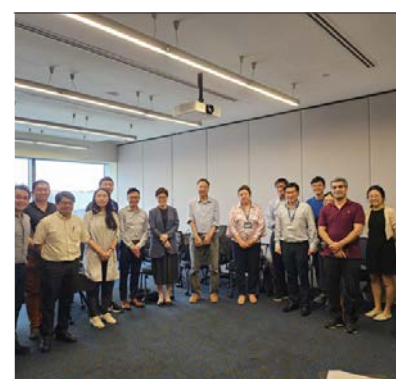
Session 1: 14 August 2024



MedTech-Imaging, Devices & Sensors  
Wednesday, 14 August 2024  
NUHS Tower Block T10-02



Session 2 - MedTech-Digital  
Thursday, 15 August 2024  
NUHS Tower Block T10-02



15 August 2024

### Engineering in Medicine (EiM) Grant Call

<b>Quantum</b>	Each project will be awarded \$100,000, with equal co-funding from (i) NUHS' seed grant funding and (ii) CDE's MOE Academic Research Fund (AcRF) Tier 1 grant funding.
<b>Duration</b>	2 years (1 February 2025 to 31 January 2027)
<b>Eligibility</b>	<ul style="list-style-type: none"> <li>Each project must have 1 NUHS PI and 1 CDE PI.</li> <li>Only PIs who have participated in the engagement session will be eligible to apply for the EiM Grant Call.</li> </ul> <p><u>For NUHS PIs only:</u></p> <ul style="list-style-type: none"> <li>NUS or NUHS Clinicians, nurses, AHPs who have received in-depth scientific training through a PhD programme, Masters programme, or at least 2 years post-doctoral intensive research experience.</li> <li>PIs must have a primary appointment in and salaried by NUHS entities. Lead PI must be in Singapore at least 75% of the time during the grant period.</li> </ul> <p><u>For CDE PIs only:</u></p> <ul style="list-style-type: none"> <li>PIs must be a full-time tenure-track faculty staff, Educator Track [Lecturers, Senior Lecturers and Associate Professors (Educator Track)], Practice Track, Research Track (tenured) or Research Track (Senior Research Fellows and above). PIs must hold at least a 75% appointment and perform duties at NUS for a minimum of 9 months a year and their contract term should exceed the project duration.</li> </ul>
<b>Deliverables</b>	<ul style="list-style-type: none"> <li>Outcomes of either:                             <ul style="list-style-type: none"> <li>applying for national level grant, or</li> <li>clinical implementation or innovation</li> </ul> </li> <li>For PIs without PhD, successful enrollment to PhD within 5 years after grant end.</li> <li>Invention disclosure within 3 years after grant end.</li> </ul>

## CONGRATULATIONS

### ENGINEERING IN MEDICINE GRANT CALL (AUG 2024) WINNERS

**Team 1**

NUHS PI: Asst. Prof Gopu Sriram  
*Dentistry*

CDE PI: A/Prof Leong Tai Wei David  
*Chemical and Biomolecular Engineering*

Title: Nanothylakoids based Oxygenation Therapy with Colorimetric Sensor for Gum Health

**Team 2**

NUHS PI: A/Prof Stephen Hau  
*Dentistry*

CDE PI: Asst Prof. Tural Khudiyev  
*Materials Science and Engineering*

Title: Development of a Wireless Fiber-Based pH Sensor for Effective Monitoring of Caries Formation

**Team 3**

NUHS PI: Asst. Prof Saima Hilal  
*Saw Swee Hock School of Public Health*

CDE PI: Asst. Prof Wu Changsheng  
*Materials Science and Engineering*

Title: Wearable digital sensors for early detection of mild cognitive impairment

**Team 4**

NUHS PI: Asst. Prof Gopu Sriram  
*Dentistry*

CDE PI: Asst. Prof Tedrick Thomas Salim Lew  
*Chemical and Biomolecular Engineering*

Title: Biosensor-Integrated Gums-on-a-Chip for Real-Time Monitoring of Gum Health

**Team 5**

NUHS PI: Dr Chan Gek Cher  
*Nephrology*

CDE PI: Asst. Prof Liu Yuxin  
*Biomedical Engineering*

Title: Non-invasive Continuous Potassium Monitoring in Patients with Kidney Diseases

**Team 6**

NUHS PI: A/Prof Wilson Tam  
*Alice Lee Centre for Nursing Studies*

CDE PI: A/Prof Khoo Eng Tat  
*Engineering Design and Innovation Centre*

Title: Development of the Socially Assistive Robot Lion for elderly: A feasibility study

## HEARTIEST CONGRATULATIONS TO ALL AWARD WINNERS

## ExxonMobil-NUS Research Fellowship: April 2024

<b>Quantum</b>	<ul style="list-style-type: none"> <li>\$100,000 per awardee</li> </ul> <p><u>Option 1</u></p> <ul style="list-style-type: none"> <li>20% protected time (up to \$2,500 per month or \$30,000 per year)</li> <li>\$70,000 grant funding to support awardee research project</li> </ul> <p><u>Option 2</u></p> <ul style="list-style-type: none"> <li>40% protected time (up to \$5,000 per month or \$60,000 per year)</li> <li>\$40,000 grant funding to support awardee research project</li> </ul>
<b>Duration</b>	1 year
<b>Eligibility</b>	<ul style="list-style-type: none"> <li>Senior Resident/MO to Consultant level</li> <li>Singaporean or Singapore PR</li> <li>Must be able to commit 20% or 40% of time to research</li> <li>Attached to a basic science laboratory/research facility for a period of 1 year</li> <li>Supervisor/mentor must be academic staff from NUS Yong Loo Lin School of Medicine</li> </ul>
<b>Deliverables</b>	<ul style="list-style-type: none"> <li>At least one original publication stemming from this project within 1 year post grant end date</li> <li>Generation of preliminary data sufficient leading subsequently to an exploratory research grant proposal and successful winning of a competitive grant within the next 2 years</li> </ul>

## EXXONMOBIL-NUS RESEARCH FELLOWSHIP FOR CLINICIANS



**Dr Low Xi Zhen**  
Associate Consultant  
Diagnostic Radiology, NUH

*"Deep learning driven assessment of Sarcopenia in patients with Cerebrovascular Disease - The Brain-Muscle interaction"*  
Mentor: Prof Khong Pek Lan



**Dr Nicodemus Oey**  
Associate Consultant (Provisional),  
Rehabilitation Medicine, NUH

*"Functional and Structural Connectivity of Neural Networks in Bilingual Aphasia Rehabilitation: A Pilot Prospective Observational Study And The Creation Of A Longitudinal fMRI Repository"*  
Mentor: A/Prof Zhou Juan, Helen

*Congratulations!*

April 2024 Grant Call Awardees



## NUHS Clinician Scientist Programme (NCSP 2.0)

To nurture promising young clinicians, NCSP 2.0 has been launched to support young talents with funding to embark on their research, build their research portfolio to eventually compete and clinch a national level competitive research grant or talent award.

### NCSP 2.0 Awardees (Dec 2023 Grant Call)

**Dr Nicholas Chew**

Associate Consultant, Cardiology, NUHCS

"Hepatic Steatosis and other Non- Standard Cardiometabolic Risk Factors among Patients with Acute Myocardial Infarction without Standard Modifiable Cardiovascular Risk Factors - The iSMuRF Study."



**Dr Cinnie Yentia Soekojo**

Consultant, Haematology-Oncology, NUH

"Understanding mechanisms of resistance to T-cell redirecting therapy in multiple myeloma: insights from single cell sequencing and spatial omics."



**Dr Ho Wen Teng Vanda**

Associate Consultant, Medicine, NUH

"Immunosenescence in latent TB infection."



**Dr Frank Tay Sen Hee**

Senior Consultant, Rheumatology/ Medicine, NUH

"IMMUNE-mediated diseases: Epigenetic PRediction, biomarker Identification and Novel Therapeutics (IMMUNEPRINT)."



**Dr Mayuri Bhargava**

Senior Resident Physician, Ophthalmology, NUH

"Glycolytic shift in the Retinal Pigment Epithelium - A Biomarker of Mitochondrial Dysfunction for Early Intervention in Age-Related Macular Degeneration (AMD)."



**Dr Choi Yoon Seong**

Assistant Professor, Diagnostic Radiology, NUS

"Glymphatic neuroimaging: Linking Alzheimer's disease, inflammation and aging."



Heartiest Congratulations

### NCSP 2.0 Awardees (Jun 2024 Grant Call)

**Dr Aaron Foo Song Chuan**

Associate Consultant, Neurosurgery/Surgery, NUH

"Testing photosensitizer-mediated light therapy for diffuse intrinsic pontine glioma - a deadly cancer of children."  
Mentor: Dr Daniel Teh Boon Loong



**Dr Jing Mingxue**

Consultant, Neurology/Medicine, NUH

"Automated cT angiogram and cT perfusion-based imaging Analysis and plaque Characterization for risk stratification in Intracranial Atherosclerotic Disease - The ATTACK-ICAD Study."  
Mentor: Dr Leonard Yeo Leong-Litt



**Dr Tan Xiang Xuan Eunice**

Consultant, NUCOT Liver Transplant Programme, Gastroenterology & Hepatology/Medicine, NUH

"Enhancing Equity in Liver Transplantation Using Machine Learning Algorithms."  
Mentor: Dr Mark Dhinesh Muthiah



**Dr Loh Ser Pheng John**

Consultant, Oral & Maxillofacial Surgery, NUCOHS

"The Chimeric Phantom Flap - A Novel 3-D Printed High Fidelity Model for Viability Evaluation of Complex Free Tissue Flaps"  
Mentor: A/Prof Leo Hwa Liang



**Dr Sarah Li Weiling**

Consultant, Obstetrics and Gynecology, NUH

"AI-Powered CURA Application for Identifying At-Risk Pregnancies in Obstetric Management: A Randomized Controlled Trial (CURAte trial)"  
Mentor: A/Prof Chan Shiao-Yng & A/Prof Tai Bee Choo



**Dr Tan Chin Lik**

Associate Consultant, Neurosurgery/Surgery, NUH

"Investigating reactive astrocyte subtypes and their role in glial scar formation following intracerebral haemorrhage."  
Mentor: A/Prof Raymond Seet Chee Seong



Heartiest Congratulations

### NCSP 2.0 Grant Call

<b>Quantum</b>	<ul style="list-style-type: none"> <li>Total Funding: \$400K, components include:                     <ul style="list-style-type: none"> <li>Grant Funding: \$100K per annum x 2 years (Manpower, Equipment &amp; Consumables, Training)</li> <li>Award to Department*: \$80K per annum x 2 years (Backfill up to 40%)</li> <li>Award to Mentor*: \$20K per annum x 2 years</li> </ul> </li> <li>* Flexibility to vire to grant funding</li> </ul>
<b>Duration</b>	2 years
<b>Eligibility</b>	<ul style="list-style-type: none"> <li>All NUHS clinicians from AH, NTFGH, NUH, NUP, NUS Medicine, NUS SSHSPH, NUS Dentistry, NUS ALCNS.</li> <li>Senior Residents entering NUHS employment, Associate Consultant or Consultant.</li> <li>Applicants who are health science / healthcare professionals with non-medical degrees, such as nurses, pharmacists and other allied health professions listed on <a href="#">MOH's website</a> in clinical practice are eligible to apply.</li> <li>Faculty on NUS tenure-track will not be eligible for NCSP grant. Any exceptions will be on case-by-case basis.</li> </ul>
<b>Deliverables</b>	<ul style="list-style-type: none"> <li><b>Complete formal research training:</b> Successful application or completion of MBA/MPH/MCI/PhD/MSc(Nursing)/PhD(Nursing).</li> <li><b>Progress in research career over a 5-year period, as demonstrated by at least one of the following:</b> <ul style="list-style-type: none"> <li>Progress to National CS, secure <b>NMRC Talent Awards</b> (i.e. TA, CSA)</li> <li>Secure <b>NMRC Competitive Grants</b> (i.e. NIG, CS-IRG)</li> <li>Progress to <b>NUS tenure track</b> (in partnership with CSDU)</li> <li>Progression to <b>Cluster CS</b></li> </ul> </li> <li><b>Ensure successful publication:</b> At least 1 publication in the NUSMed Journal Whitelist (first author) within 1-year post grant end date.</li> </ul>

## Ongoing Achievements of NCSP2.0 Awardees

**Best Graduate Research Publication Award**  
2024

The Division of Graduate Studies would like to extend our heartiest congratulations to the winners.

**DR HUANG QINGYAO DANIEL**  
1st Author

**PUBLICATION TITLE**  
Fibrosis Progression Rate in Biopsy-Proven Nonalcoholic Fatty Liver Disease Among People With Diabetes Versus People Without Diabetes: A Multicenter Study

**JOURNAL**  
Gastroenterology

**THESIS ADVISOR**  
A/Prof Dan Yock Young, Department of Medicine and Haematology, Translational Research Programme

**DR LEE HSIEN REN, SHAWN**  
1st Author

**PUBLICATION TITLE**  
Prognostic and Pharmacodynamic Heterogeneity of Hyperdiploidy in Childhood Acute Lymphoblastic Leukemia

**JOURNAL**  
Journal of Clinical Oncology

**THESIS ADVISOR**  
Prof Allen Yock Eng Jui, Department of Paediatrics and NUS Centre for Cancer Research (NCRC), Translational Research Programme

(May 2022)



**Dr Mayank Dalakoti, MPhil, PhD Candidate**  
NMRC MOMMENTUM CG  
Seed Grant  
Cambridge-LKY



**Dr Ellie Choi, PhD Candidate**  
NMRC RTF  
NMRC CNIG  
NMRC Seed Funding



**Dr Chan Gek Cher, PhD Candidate**  
NMRC RTF



**Dr David Chen, PhD Candidate**  
NMRC RTF  
A\*STAR SB-IF  
A\*STAR SB-PF



**Dr Hong Wei Zhen**



**Dr Low Jia Ming, PhD Candidate**  
NMRC RTF  
NMRC CNIG  
A\*STAR IAF-PP



**Dr Daniel Huang, PhD Candidate**  
NMRC RTF  
NMRC CNIG  
NMRC TA



**Dr Mervyn Lim, PhD Candidate**  
NMRC RTF



**Dr Wendy Wong, PhD Candidate**  
NMRC RTF



**Dr Sanjay de Mel, PhD Candidate**  
NMRC RTF  
NMRC TA



**Dr Sharon Tan, PhD Candidate**  
NMRC RTF



**Dr Shawn Lee, PhD**  
NMRC RTF  
NMRC CNIG



**Dr Sim Ming Ann, PhD Candidate**  
NMRC RTF  
NMRC HLCA



**Dr Velda Han, PhD**



**Dr Serene Goh, PhD Candidate**



**Dr Tan Yong Chuan**

(Sep 2022)

(Dec 2022)

(Jun 2023)

(Dec 2023)

(Jun 2024)



**Dr Benjamin Tan, PhD Candidate**  
NMRC RTF



**Dr Dedrick Chan, DPhil**  
NMRC RTF



**Dr Choi Yoon Seong, PhD**



**Dr Cinnie Soekjo, PhD Candidate**  
NMRC RTF



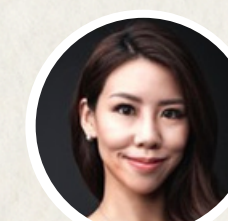
**Dr Frank Tay, PhD**  
NMRC RTF  
NMRC TA



**Dr Aaron Foo, PhD**



**Dr Jing Mingxue**  
NMRC RTF



**Dr Sarah Li, PhD Candidate**  
NMRC RTF



**Dr Nicholas Sng, PhD Candidate**



**Dr Wong Su Ren, PhD**



**Dr Mayuri Bhargava, PhD**  
NMRC RTF



**Dr Nicholas Chew**  
NMRC RTF



**Dr Vanda Ho, PhD Candidate**  
NMRC RTF  
NMRC Seed Funding  
NMRC OF-YIRG  
LKY Scholarship



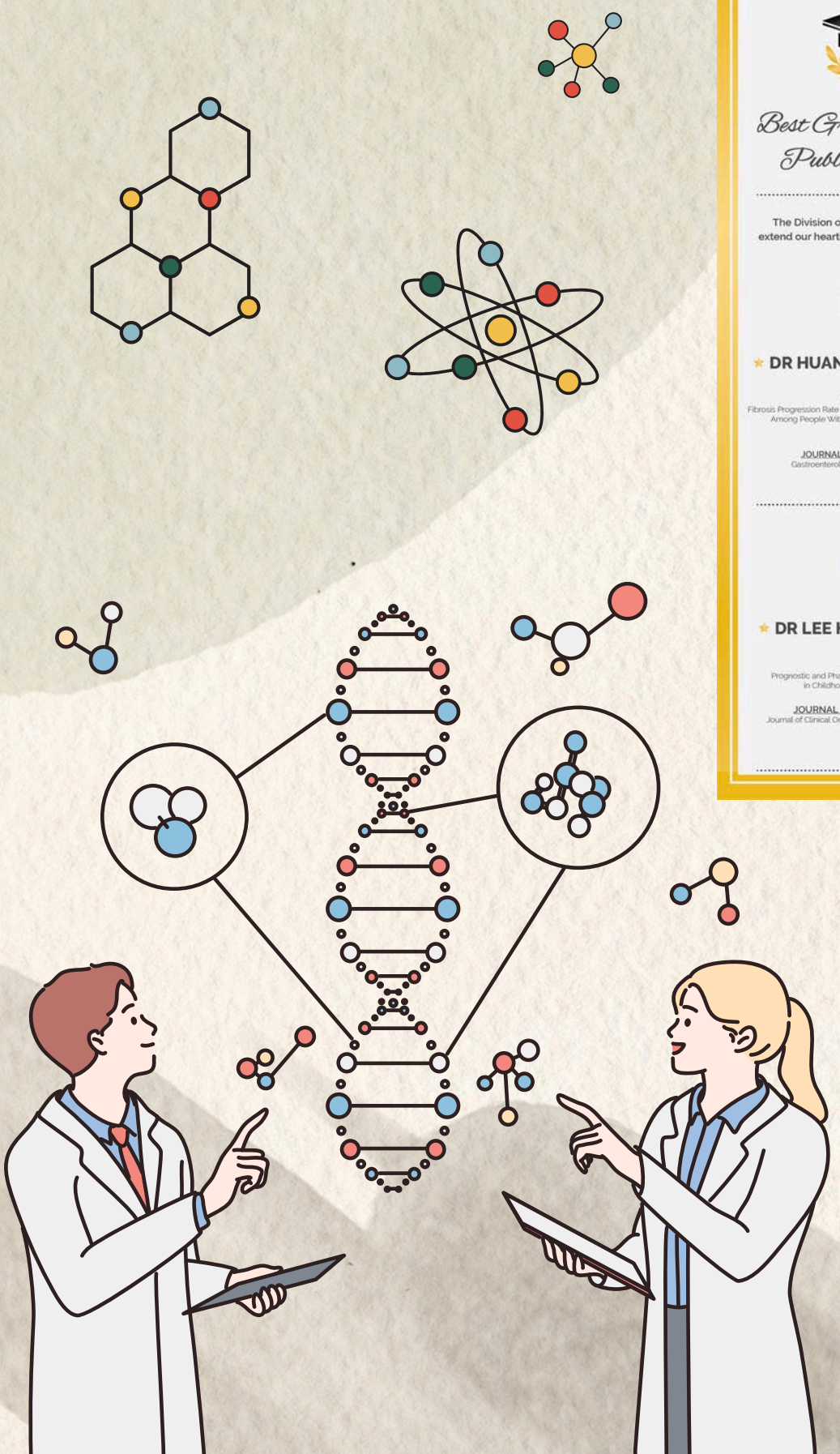
**Dr Eunice Tan**



**Dr John Loh, PhD Candidate**  
NMRC RTF



**Dr Tan Chin Lik, PhD**



## Research Concierge

Support and educate pipeline clinician scientists on administration and research coordination required for conducting their studies.



Jasmine, Elaine April and the team have been an incredible source of expertise and support. Keep up the amazing work.

The service (Derek) has been helpful as an bridging grant to initiate the research while securing external funding.

Derek has kindly guided me about how to use grants regarding manpower cost, etc. The CS concierge service itself is more than expected.

Jasmine has been helpful with providing support and solutions to administrative challenges we were facing - including balancing the interface between NUH/NUS for funding. She also provided us with advice on setting up a new study, investigator site file keeping, and grant management. This was especially critical when my RA decided to not renew his contract after the first year and went to industry. This should continue as it helps with the research administration processes which can be quite confusing to manage on your own the very first time.

### Services:

#### Clinical Research Coordination

- IRB/IACUC/OSHE Admin - regulatory submission tracking, amendments, extensions & renewal
- Research agreement - administrative support
- Management of equipment & consumables
- Study meeting coordination & report submission
- Subject recruitment & recruitment strategies
- Database management (i.e. REDCap)
- Study monitoring - initial, ad-hoc & close-out monitoring, educating PIs on key-areas for external audits
- Study documentation & protocol management

### Services:

#### Grant Management

- Procurement of equipment & consumables
- Reimbursement of fees (publication, conferences, courses, etc.)
- Tracking of grant funding expenses
- Grant virement/expansion
- Payment & transfer of funds



## Research Concierge (Clients)

**PI: Dr Low Jia Ming**

Department: Neonatology

Grant Assisted: NCSP 2.0

Project Title: Immunoprofiling and Microbiome Analysis of Gestational Immunity For Transfer Cohort



**PI: Dr Sim Ming Ann**

Department: Anaesthesia

Grant Assisted: NCSP 2.0

Project Title: Blood-based Biomarkers in Neurocognition and Aging



**PI: Dr Mervyn Lim Jun Rui**

Department: Neurosurgery

Grant Assisted: NCSP 2.0

Project Title: PREdiction and PAThophysiology of Cognitive Health in Spontaneous IntraCerebral Hemorrhage (The PREPATCH-SICH Study).



**PI: Dr Frank Tay Sen Hee**

Department: Rheumatology

Grant Assisted: NCSP 2.0

Project Title: IMMUNe-mediated diseases: Epigenetic PRediction, biomarker Identification and Novel Therapeutics (IMMUNEPRINT).



**PI: Dr Choi Yoon Seong**

Department: Diagnostic Radiology

Grant Assisted: NCSP 2.0

Project Title: Glymphatic neuroimaging: Linking Alzheimer's disease, inflammation and aging



**PI: Dr Aaron Foo Song Chuan**

Department: Neurosurgery

Grant Assisted: NCSP 2.0

Project Title: Testing photosensitizer-mediated light therapy for diffuse intrinsic pontine glioma - a deadly cancer of children



**PI: Tan Xiang Xuan Eunice**

Department: Gastroenterology & Hepatology

Grant Assisted: NCSP 2.0

Project Title: Enhancing equity in liver transplantation using machine learning algorithms



**PI: Dr Aishworiya Ramkumar**

Department: Paediatrics

Grant Assisted: NMRC TA

Project Title: Evaluating a screening instrument for the early identification of autism spectrum disorder among young children in Singapore



**PI: Dr Chew Ka Lip**

Department: Laboratory Medicine

Grant Assisted: NMRC CNIG

Project Title: Development of a Rapid molecular assay for rapid identification of antifungal resistance







## Biostatistics

- **Statistical Consultation:**
  - Study design for clinical research, sample size calculation.
  - Statistical analysis preparation.
- **Research Collaboration:**
  - Data analysis, interpretation, and manuscript preparation.
- **Statistical Education:**
  - Postgraduate courses: MDG5108 and ABM5002.
  - Workshops, and talks.
- **Grant Enhancement:**
  - Review and enhancement of statistical methodology.

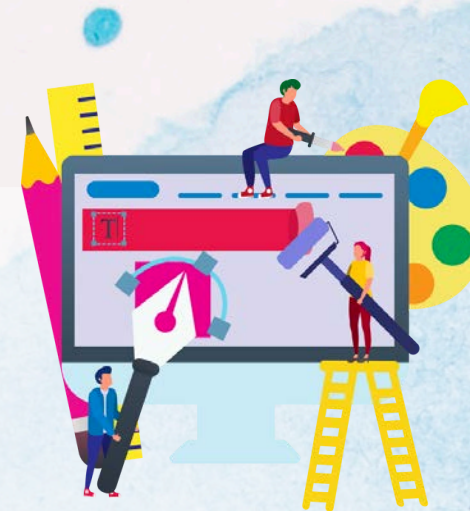
**Contact:** Dr. Shen Liang  
[medsl@nus.edu.sg](mailto:medsl@nus.edu.sg)



## Medical & Scientific Communication

- **Manuscript Editing Service:**
  - Editing and polishing manuscripts for peer-reviewed publications.
  - *Selection Criteria:* (1) All faculty members of YLLSOM, NUS Dentistry and SSHSPH, NUHS physician-researchers, (2) Submitting to Q1 Journals only, (3) Journal guidelines fulfilled before submission of the final draft.
- **Grant enhancement Service:**
  - Editing Service for Grant Enhancement Masterclass.
  - Grant Proposal Editing Service.

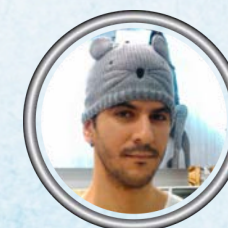
**Contact:** Dr. Rupangi Verma  
[Rupangi\\_verma@nuhs.edu.sg](mailto:Rupangi_verma@nuhs.edu.sg)



## Scientific Illustration

- **Illustration & graphic design:**
  - Schematic figures for academic purposes: scientific papers, books and research proposals.
  - Infographics for presentations.
  - Artwork for conference banners.
- **Editorial Work**
  - Journal and book covers.
  - Illustrations for feature media (news coverage).
- **Data Visualization**
  - 3D data editing (MRI, confocal microscopy, Protein Data Bank).
  - 3D modeling and digital sculpting.

**Contact:** Dr. Diego P. Araujo  
[diego@nus.edu.sg](mailto:diego@nus.edu.sg)



## Systematic Review

- **Consultation:** Methodology and execution of systematic reviews and evidence summaries.
- **Collaboration:** Development of protocols, literature searching, conducting meta-analyses, assessing study biases, summarizing findings, and preparing manuscripts.
- **Education:** Workshops, courses, and talks on systematic reviews and meta-analyses.
- **Guidance:** Registration for research projects with the Cochrane collaboration.

**Contact:** Dr. Miny Samuel  
[medminy@nus.edu.sg](mailto:medminy@nus.edu.sg)





## Biostatistics

### Statistical Consultation:

Research projects aided	180+
Co-authorship	74

### Statistical Education:

Workshops	7
Postgraduate Modules	2 (MDG5108 & ABM5002)
Short Talks	5

### Clients included:



### Published papers supported by BSU (non-exhaustive):

**ELSEVIER** Ageing Research Reviews Volume 101, November 2024, 102470

Review article

### Motoric cognitive risk syndrome as a predictive factor of cognitive impairment and dementia – A systematic review and meta-analysis

Nicholas E.-Kai Lim <sup>a,1</sup>, Brian Sheng Yep Yeo <sup>a,1</sup>, Rachel Siying Lee <sup>a</sup>, Jun Xiang Lim <sup>a</sup>, Yiong Huak Chan <sup>b</sup>, Nagaendran Kandiah <sup>c,d</sup>, Roger Ho <sup>e</sup>, Cyrus Su Hui Ho <sup>e</sup>, Jean Woo <sup>f</sup>, Hidenori Arai <sup>g</sup>, Reshma Aziz Merchant <sup>h,i</sup> ✉

**JAAD** RESEARCH LETTER Volume 60, Issue 1, P131-136, February 2024

Patient-physician concordance in age, sex, and race is not associated with increased trust, satisfaction, empathy, or physician's perception of a difficult patient in Singapore

Ellie Choi, MBBS, MRCP <sup>a,b</sup> ✉, Kalyani Rajesh Patwardhan, MD, MRCP <sup>a</sup>, Valencia Long, MBBS, MRCP <sup>a</sup>, Yiong Huak Chan, PhD <sup>c</sup>, Yik Weng Yew, MBBS, PhD <sup>d,e</sup>, Hazel H. Oon, MD, MRCP <sup>d</sup>, Steven Thng, MBBS, MRCP <sup>d</sup>, Chris Tan, MBBS <sup>d</sup>, Nisha Suyen Chandran, MBBS, MRCP <sup>a,b</sup>, Phillip Phan, PhD <sup>f</sup> ✉

**Check for updates**

### Gestational diabetes mellitus and development of intergenerational non-alcoholic fatty liver disease (NAFLD) after delivery: a systematic review and meta-analysis

Rui Xun Foo <sup>a,b</sup>, Jenny Junyi Ma <sup>a,b</sup>, Ruochen Du <sup>c</sup>, George Boon Bee Goh <sup>d</sup>, Yap Seng Chong <sup>e</sup>, Culin Zhang <sup>f,g,h,i</sup> and Ling Jun Li <sup>f,g,h</sup> ✉

<sup>a</sup>Yong Loo Lin School of Medicine, National University of Singapore, Singapore  
<sup>b</sup>Statistics Unit, Yong Loo Lin School of Medicine, National University of Singapore, Singapore  
<sup>c</sup>Department of Gastroenterology and Hepatology, Singapore General Hospital, Singapore  
<sup>d</sup>Medicine Academic Clinical Program, Duke-NUS Medical School, Singapore  
<sup>e</sup>Department of O&G, Yong Loo Lin School of Medicine, National University of Singapore, Singapore  
<sup>f</sup>Global Centre for Asian Women's Health, Yong Loo Lin School of Medicine, National University of Singapore, Singapore  
<sup>g</sup>NUS Bio-Echo Asia Centre for Reproductive Longevity and Equality (ACRELE), Yong Loo Lin School of Medicine, National University of Singapore, Singapore

Li et al. Critical Care (2024) 28:30 https://doi.org/10.1186/s13054-024-04804-7 Critical Care

**RESEARCH** Open Access

### Prognostic evaluation of quick sequential organ failure assessment score in ICU patients with sepsis across different income settings

Andrew Li<sup>1</sup>, Lowell Ling<sup>2†</sup>, Hanyu Qin<sup>3</sup>, Yaseen M. Arabi<sup>4</sup>, Sheila Nainan Myatra<sup>5</sup>, Moritoki Egi<sup>6</sup>, Je Hyeong Kim<sup>7</sup>, Mohd Basri Mat Nor<sup>8</sup>, Do Ngoc Son<sup>9</sup>, Wen-Feng Fang<sup>10,11</sup>, Bambang Wahyuprajitno<sup>12</sup>, Madiha Hashmi<sup>13</sup>, Mohammad Omar Faruq<sup>14</sup>, Boonsong Patjanasontorn<sup>15</sup>, Maher Jaffer Al Bahrani<sup>16</sup>, Babu Raja Shrestha<sup>17</sup>, Ujma Shrestha<sup>17</sup>, Khalid Mahmood Khan Nafees<sup>18</sup>, Kyi Kyi Sann<sup>19</sup>, Jose Emmanuel M. Palo<sup>20</sup>, Naranpurev Mendsaikhan<sup>21</sup>, Aidos Konkayev<sup>22,23</sup>, Khamsay Detleuxay<sup>24</sup>, Yiong Huak Chan<sup>25</sup>, Bin Du<sup>3</sup>, Jigeeshu Vasishta Divatia<sup>3</sup>, Younsuck Koh<sup>26</sup>, Jason Phua<sup>12,7</sup>, the MOSAICS II Study Group and for the Asian Critical Care Clinical Trials Group

**ELSEVIER** International Journal of Nursing Studies Volume 160, December 2024, 104906

### The effectiveness of Parentbot - a digital healthcare assistant - on parenting outcomes: A randomized controlled trial

Joelle Yan Xin CHUA <sup>a</sup>, Mahesh CHOOLANI <sup>b</sup>, Cornelia Yin Ing CHEE <sup>c</sup>, Huso YI <sup>d</sup>, Yiong Huak CHAN <sup>e</sup>, Joan Gabrielle LALOR <sup>f</sup>, Yap Seng CHONG <sup>b</sup>, Shefaly SHOREY <sup>a</sup> ✉

> *Respiology*. 2024 Nov;29(11):976-984. doi: 10.1111/resp.14780. Epub 2024 Jul 3.

### DUETS for Light's in separating exudate from transudate

Astrid Gardiner <sup>1,2</sup>, Ryan Ling <sup>3</sup>, Yiong-Huak Chan <sup>4</sup>, Jose Porcel <sup>5</sup>, Y C Gary Lee <sup>6,7,8</sup>, Chia-Meng Teoh <sup>1,3</sup>, Mei-Fong Liew <sup>1</sup>, Jeevesh Kapur <sup>9</sup>, Seow-Ping Low <sup>1,3</sup>, Pyng Lee <sup>1,3</sup>

Affiliations + expand  
 PMID: 38960399 DOI: 10.1111/resp.14780

**ELSEVIER** The American Journal of Clinical Nutrition Available online 13 November 2024 In Press, Uncorrected Proof What's this?

Original Research Article

### The prospective associations of fetal growth-related pregnancy complications with subsequent breastfeeding duration and markers of human milk production

Wei Wei Pang <sup>1,2,3</sup> ✉, Donna T Geddes <sup>4</sup>, Ching-Tat Lai <sup>4</sup>, Navin Michael <sup>5</sup>, Jonathan Huang <sup>5,6,7</sup>, Yiong Huak Chan <sup>8</sup>, Clara Y Cheong <sup>5</sup>, Doris Fok <sup>9</sup>, Shikha Pundir <sup>10</sup>, Sharon Ng <sup>3</sup>, Mark H Vickers <sup>10</sup>, Mei Chien Chua <sup>11,12,13</sup>, Kok Hian Tan <sup>13,14</sup>, Keith M Godfrey <sup>15,16</sup>, Lynette P Shek <sup>5,17,18</sup>, Yap-Seng Chong <sup>5,19</sup>, Johan G Eriksson <sup>5,19,20,21</sup>, Shiao-Yng Chan <sup>3,5</sup>, Mary E Wlodek <sup>4,5,22</sup> ✉

### Workshops (non-exhaustive):

**RSU Upcoming Workshop**

**Biostatistics Workshop**  
 DESIGN OF MEDICAL RESEARCH STUDY & BASIC-INTERMEDIATE  
 18-19 MAY (2 HALF DAYS)  
 BY MS WONG HUNG CHEW, MR DU RUOCHEN & MR YAP QAI VEN

**ADVANCED BIostatistics WORKSHOP**  
 18-17 OCT (4 HALF DAYS)  
 BY DR SHEN LIANG

Registration Link: [Registration Link](#)  
 Cancellation Policy: Any cancellation must be received by the Secretariat in writing. There will be no refund for any cancellations after 10 days prior to the start of the workshop. The Organizer reserves the right to cancel the workshop and fully refund the participants should unforeseen circumstances arise.

RESEARCH SUPPORT UNIT WORKSHOP

### DESIGN OF MEDICAL RESEARCH STUDY & BASIC-INTERMEDIATE BIostatistics WORKSHOP

**Objectives**

- Refresh on the concepts on basic clinical research methodology and basic statistical theory of estimation & hypothesis testing
- Understand the effects of sample size on clinical results and sample size calculations methodology
- Set up a database in SPSS, import Excel files, perform simple manipulations on the data and simple descriptive statistics
- Understand the statistical concepts for the various methods of statistical analysis for different outcome measures
- Understand the theory of setting up statistical models for different outcome measures

**MS WONG HUNG CHEW**  
**MS YAP QAI VEN**  
**MR DU RUOCHEN**

**13-16 MAY 2024**  
 9:00 AM – 1:00 PM (4 HALF DAYS)

**ZOOM**

**FEE PER PERSON \$491.00** with GST

**REGISTER HERE**

**A Zoom link for each workshop will be provided after the registration process and when closer to the date. Registration is on a first-come-first-served basis, with payment.**  
 Closing Date: 12 April 2024, Friday  
 Contact : Ms Rafika at rsu-nuhs@nus.edu.sg

**NUS** Yong Loo Lin School of Medicine

# Support



## Medical & Scientific Communication

### Text Editing

Manuscripts	21
Grants	12

Dear Dr. Rupangi,

Many thanks for your email and for promptly completing the revisions on my manuscript ahead of schedule. I greatly appreciate your thoroughness and attention to detail in carrying out the English language editing. I will proceed with a final review and ensure that all aspects align with the manuscript's vision before final submission. Many thanks again for your continuous support with various manuscripts.

Best Regards,  
Associate Professor  
Pharmacology

Dear Rupangi,

It would have been impossible (to get the NMRC CNIG grant awarded) without your advise and support! Thank you once again so much.

Consultant, Neonatology

# RSU Production 2024: Medical & Scientific Communication

## Published manuscripts acknowledging the RSU-MSC editorial support (non-exhaustive):

**Acknowledgements**

We would like to express our gratitude to Dr. Rupangi Verma from the Medical and Scientific Communication, Research Support Unit at the National University Health System, Singapore for her meticulous review and editing of our manuscript for English language accuracy.

**Impact factor 28.5**

Lu et al. *Journal of Hematology & Oncology* (2024) 17:16  
https://doi.org/10.1186/s13045-024-01535-8

Journal of Hematology & Oncology

**REVIEW** **Open Access**

**Nanoparticles in tumor microenvironment remodeling and cancer immunotherapy**

Qiang Lu<sup>1†</sup>, Dongquan Kou<sup>2†</sup>, Shenghan Lou<sup>3†</sup>, Milad Ashrafizadeh<sup>4,5,6</sup>, Amir Reza Aref<sup>7,8</sup>, Israel Canadas<sup>9</sup>, Yu Tian<sup>10</sup>, Xiaojia Niu<sup>11</sup>, Yuzhuo Wang<sup>11</sup>, Pedram Torabian<sup>12,13</sup>, Lingzhi Wang<sup>14,15</sup>, Gautam Sethi<sup>14,15\*</sup>, Vinay Tergaonkar<sup>16</sup>, Franklin Tay<sup>17</sup>, Zhennan Yuan<sup>18\*</sup> and Peng Han<sup>18,19\*</sup>

**Impact factor 16.3**

Chemical Engineering Journal 495 (2024) 153438

Contents lists available at ScienceDirect

Chemical Engineering Journal

journal homepage: [www.elsevier.com/locate/cej](http://www.elsevier.com/locate/cej)

Review

**Micelle-engineered nanoplatfoms for precision oncology**

Wei Gao<sup>a</sup>, Ashkan Bigham<sup>b</sup>, Matineh Ghomi<sup>c</sup>, Ali Zarrabi<sup>d,e,f,g</sup>, Navid Rabiee<sup>c</sup>, Mohammad Reza Saeb<sup>h</sup>, Yavuz Nuri Ertas<sup>b,i</sup>, Arul Goel<sup>j</sup>, Esmael Sharifi<sup>j</sup>, Milad Ashrafizadeh<sup>k,l,m</sup>, Gautam Sethi<sup>m</sup>, Murtaza M. Tambuwala<sup>n</sup>, Yuzhuo Wang<sup>o</sup>, Mohammadreza Ghaffarlou<sup>p</sup>, Taiwei Jiao<sup>q,r</sup>

**Impact factor 13.28**

Ageing Research Reviews 100 (2024) 102428

Contents lists available at ScienceDirect

Ageing Research Reviews

journal homepage: [www.elsevier.com/locate/arr](http://www.elsevier.com/locate/arr)

Review article

**Autophagy in aging-related diseases and cancer: Principles, regulatory mechanisms and therapeutic potential**

Na Wu<sup>a,1</sup>, Wenhui Zheng<sup>b,1</sup>, Yundong Zhou<sup>c,1</sup>, Yu Tian<sup>d,e,1</sup>, Min Tang<sup>f</sup>, Xiaoqiang Feng<sup>g</sup>, Milad Ashrafizadeh<sup>h,i</sup>, Yuzhuo Wang<sup>j</sup>, Xiaojia Niu<sup>k</sup>, Murtaza Tambuwala<sup>l</sup>, Lingzhi Wang<sup>l</sup>, Vinay Tergaonkar<sup>m</sup>, Gautam Sethi<sup>n,o</sup>, Daniel Klionsky<sup>o</sup>, Li Huang<sup>p,q</sup>, Ming Gu<sup>p,q,r,s</sup>

**Impact Factor 10.9** **ARTICLE IN PRESS**

Journal of Advanced Research xxx (xxxx) xxx

Contents lists available at ScienceDirect

Journal of Advanced Research

journal homepage: [www.elsevier.com/locate/jare](http://www.elsevier.com/locate/jare)

Original Manuscript

**A novel drug prejudice scaffold-imidazopyridine-conjugate can promote cell death in a colorectal cancer model by binding to  $\beta$ -catenin and suppressing the Wnt signaling pathway**

Min Hee Yang<sup>a,1</sup>, Basappa Basappa<sup>b,1</sup>, Suresha N. Deveshegowda<sup>b</sup>, Akshay Ravish<sup>b</sup>, Arunkumar Mohan<sup>c</sup>, Omantheswara Nagaraja<sup>c</sup>, Mahendra Madegowda<sup>c</sup>, Kanchugarakoppal S. Rangappa<sup>b</sup>, Amudha Deivasigamani<sup>d</sup>, Vijay Pandey<sup>e,f,g</sup>, Peter E. Lobie<sup>e,f,g</sup>, Kam Man Hui<sup>h,\*</sup>, Gautam Sethi<sup>h,\*</sup>, Kwang Seok Ahn<sup>h,\*</sup>

**Impact factor 10.7**

Mia et al. *Experimental Hematology & Oncology* (2024) 13:68  
https://doi.org/10.1186/s40164-024-00529-z

Experimental Hematology & Oncology

**REVIEW** **Open Access**

**Versatile function of NF- $\kappa$ B in inflammation and cancer**

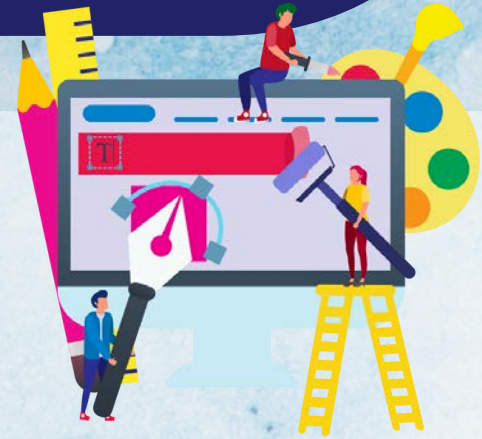
Qiang Ma<sup>1†</sup>, Shuai Hao<sup>2,3†</sup>, Weilong Hong<sup>2</sup>, Vinay Tergaonkar<sup>4</sup>, Gautam Sethi<sup>5\*</sup>, Yu Tian<sup>6\*</sup> and Chenyang Duan<sup>2\*</sup>

### Editor for the CSDU - Grant Enhancement Masterclass (GEM). List of project awarded:

Name/Designation/Department	Project Title	NMRC Award
 <b>Dr Catherine Dong</b> Assistant Professor Alice Lee Centre for Nursing Studies (ALCNS)	Heart-Brain Connection for Vascular and Cognitive Health	Clinician Scientist Award – Investigator (CSA INV)
 <b>Dr Vivien Wu</b> Assistant Professor Alice Lee Centre for Nursing Studies (ALCNS)	Dose-response Effect of Community Dance Programme on the Physical, Cognitive, Psychosocial Health of Pre-frail Older Adults: A Cluster Randomised Trial with Co-design Approach and Process Evaluation	HPHSR Clinician Scientist Award – Investigator (HCSA INV)
 <b>Dr Aishworiya Ramkumar</b> Consultant Paediatrics	Evaluating a screening instrument for the early identification of autism spectrum disorder among young children in Singapore	Transition Award (TA)
 <b>Dr Low Jia Ming</b> Consultant Neonatology	The Protective Role of Maternal Immunization in Early Life	Clinician Scientist – New Investigator Grant (CNIG)



# Support



## Scientific Illustration

### Editorial & Academic Illustration:

Figures for Manuscripts	13 figures for 12 projects
Figures for Grant Proposals	2
Figures for Books	2 figures for 1 chapter

### Illustration & Design Workshops:

Workshops	2
-----------	---

### Visuals for Events/Communication:

TRP and Research Centre Promotional Visuals	3 projects (2 infographics, 1 set of 7 figures)
Medical School Comm Visuals	3 figures, 1 logo

### Clients included:



# RSU Production 2024: Scientific Illustration Service

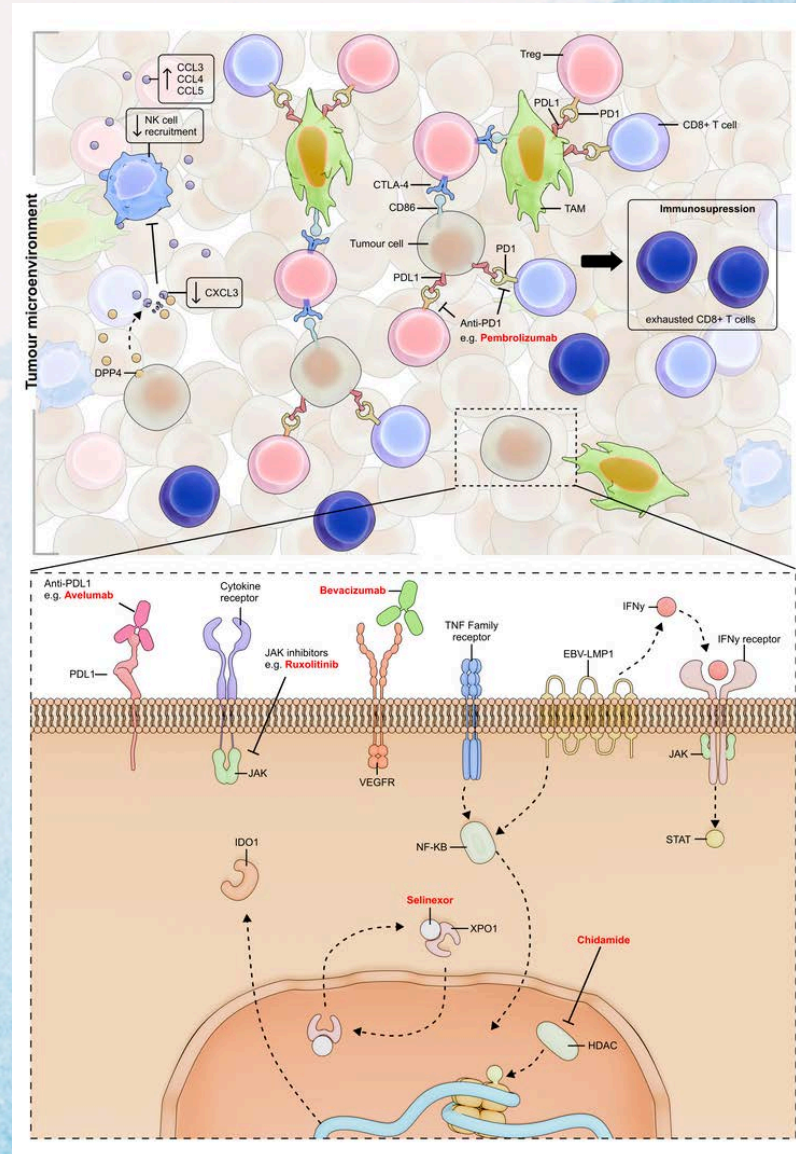


Figure for academic publication. Dr. Chan Wee Lee, William (NCIS), Dr. Ng Siok Bian (NUHS, NUS, CSI)

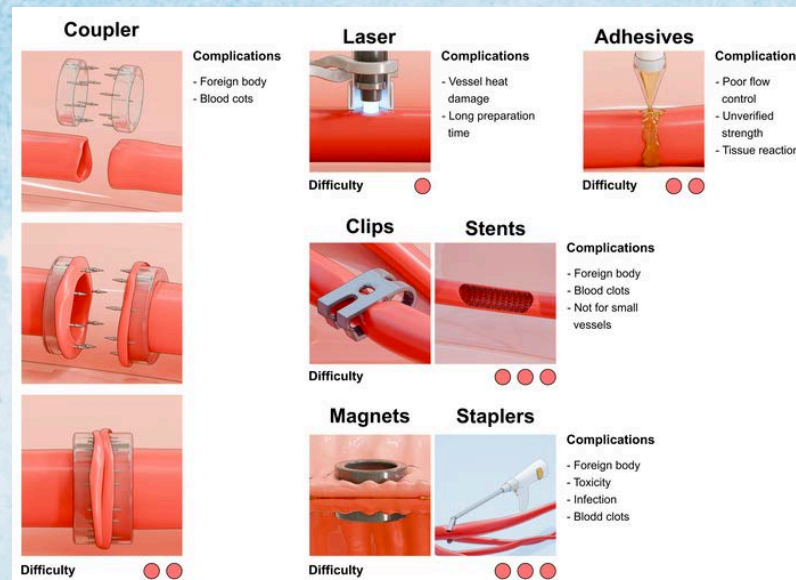


Figure for academic publication. Dr. John Loh Ser Pheng (NUCOHS)

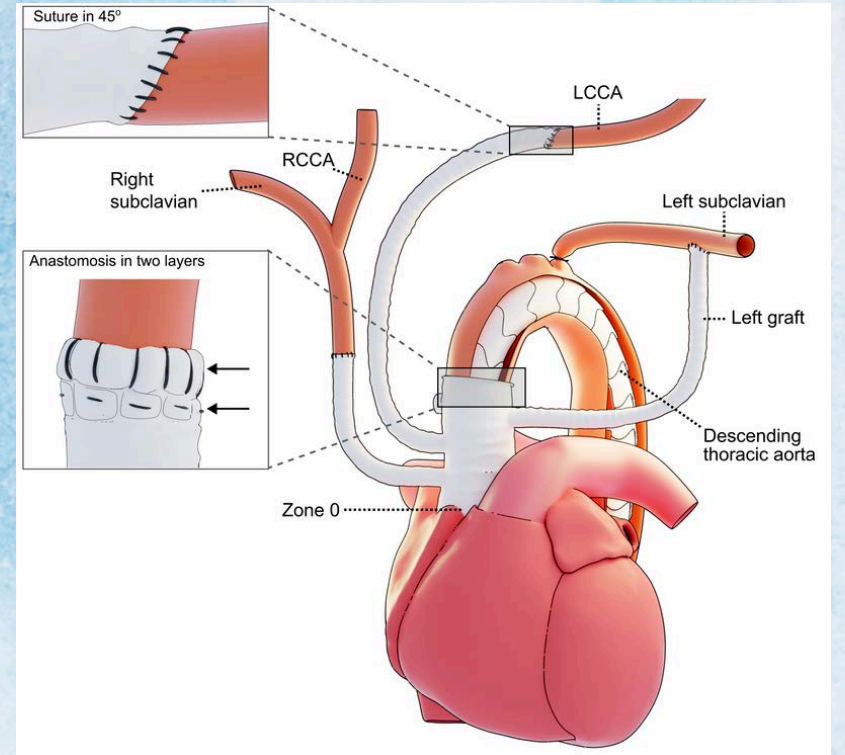


Figure for academic publication. Dr. Faizuss Sazzad (NUS Medicine), Dr. Vitaly A. Sorokin (NUH, CTVS)

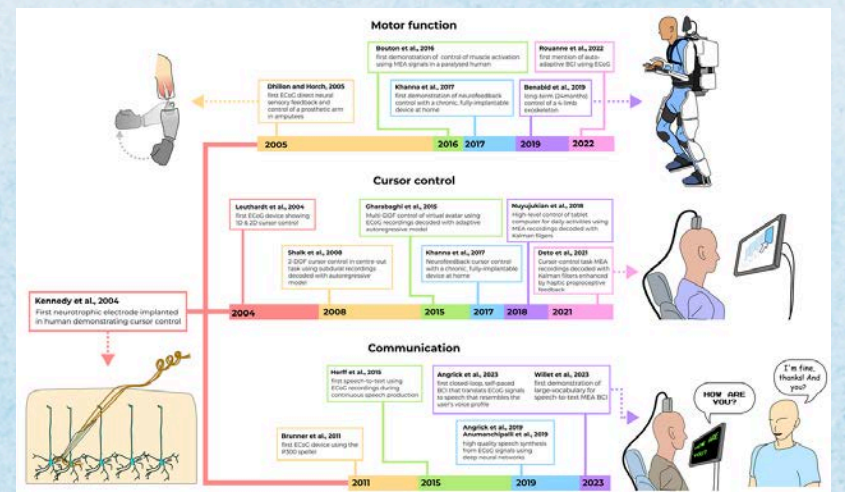


Figure for academic publication. Dr. Mervyn Lim Jun Rui (MOH, SSHSPH)

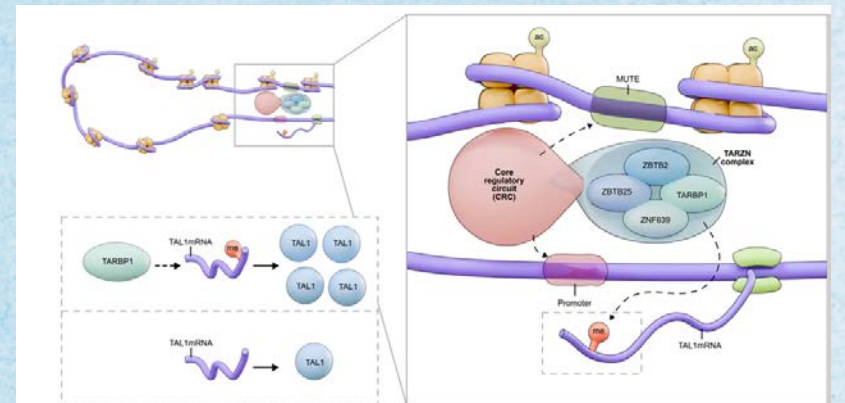


Figure for academic publication. Nurkaiyisah Amirah Binti Zaal Anuar (NUS, CSI), Dennis Kappel (NUS, CSI)

# Support



## Systematic Review

### Consultation & Training:

Research projects aided	> 30
Global Evidence Summit (GES) Member of the Abstract Review committee ( <a href="https://www.globalevidencesummit.org/abstract-review-committee-arc/">https://www.globalevidencesummit.org/abstract-review-committee-arc/</a> )	

### Statistical Education:

Workshops	2 (Cochrane workshops)
Lectures	1 CSA

### Publications:

Published reviews	10
-------------------	----

### Clients included:



# RSU Production 2024: Systematic Review Unit (SRU)

Review > Osteoporos Int. 2024 Nov 28. doi: 10.1007/s00198-024-07307-x. Online ahead of print.

## Effect of yoga on balance, falls, and bone metabolism: a systematic review of randomized controlled trials in healthy individuals

Paras Bajaj<sup>1</sup>, Lakshmi Nagendra<sup>2</sup>, Abha Bajaj<sup>3</sup>, Miny Samuel<sup>4</sup>, Manju Chandran<sup>5, 6, 7</sup>

Affiliations + expand  
PMID: 39607489 DOI: 10.1007/s00198-024-07307-x

> J Allergy Clin Immunol Glob. 2023 Oct 18;3(1):100181. doi: 10.1016/j.jacig.2023.100181. eCollection 2024 Feb.

## Impact of COVID-19 pandemic on adults and children with atopic dermatitis and food allergy: Systematic review

Colver Ken Howe Ne<sup>1</sup>, Noor Hidayatul Aini Suaini<sup>2</sup>, Win Thu Aung<sup>3</sup>, Kevin Gheng Seong Ong<sup>4</sup>, Miny Samuel<sup>5</sup>, Elizabeth Huiwen Tham<sup>2, 6, 7, 8</sup>

Affiliations + expand  
PMID: 38026506 PMID: PMC10665685 DOI: 10.1016/j.jacig.2023.100181

Endocrine Abstracts (2023) 94 OC7.4 | DOI: 10.1530/endoabs.94.OC7.4

^ SFEBS2023 > Oral Communications > Thyroid (6 abstracts)

## The effectiveness of radioactive iodine vs thyroidectomy for paediatric grave's disease: a systematic review and meta-analysis

George He Shiyao<sup>1</sup>, Jolene Chia Li Ling<sup>1</sup>, Diluka Pinto<sup>2</sup>, Miny Samuel<sup>3</sup>, Cindy W.L. Ho<sup>4</sup> & Rajeev Parameswaran<sup>5,2</sup>

> Br J Surg. 2023 Oct 10;110(11):1451-1457. doi: 10.1093/bjs/znad199.

## Oncologic outcomes after breast-conserving surgery with radiotherapy versus mastectomy in patients with Paget's disease of the breast: systematic review and meta-analysis

Serene S N Goh<sup>1</sup>, Nicholas L X Syn<sup>1</sup>, Cheryl J E Lim<sup>1</sup>, Rui En Lee<sup>1</sup>, Miny Samuel<sup>2</sup>, Celene W Q Ng<sup>1</sup>

Affiliations + expand  
PMID: 37682691 DOI: 10.1093/bjs/znad199

Ann Acad Med Singap 2024;53:683-93  
<https://doi.org/10.47102/annals-acadmedsg.2024159>

## Corticosteroids in critically ill patients with community-acquired pneumonia: A systematic review and Bayesian meta-analysis

Wei Yu Chua<sup>1</sup>, Natalie Chew<sup>1</sup>, Shruthi C Iyer<sup>1</sup>, Rachel Goh<sup>1</sup>, Wei Ren Ryanna Koh<sup>2</sup> BSc, Hong Lien Yu<sup>2</sup> PhD, Qai Ven Yap<sup>3</sup> BSc, Miny Samuel<sup>4</sup> PhD, John Soong<sup>2,5</sup> MBChB, Matthew Edward Cove<sup>2</sup> MBChB

Blood Cancer Journal [www.nature.com/bcj](http://www.nature.com/bcj)

ARTICLE OPEN

## Efficacy and safety of front-line treatment regimens for Waldenstrom macroglobulinaemia: a systematic review and meta-analysis

Wee-Lee Chan<sup>1</sup>, Vanessa Cui Lian Chong<sup>2</sup>, Ian Jun Yan Wee<sup>3</sup>, Li Mei Poon<sup>1</sup>, Esther Hian Lee Chan<sup>1</sup>, Joanne Lee<sup>1</sup>, Yen-Lin Chee<sup>1</sup>, Anand D. Jeyasekharan<sup>1,4,5</sup>, Wee-Joo Chng<sup>1,4,5</sup>, Miny Samuel<sup>6</sup> and Sanjay de Mel<sup>1,4,5\*</sup>

© The Author(s) 2023

Received: 6 June 2023 | Revised: 31 July 2023 | Accepted: 3 August 2023  
DOI: 10.1111/pai.14010

SYSTEMATIC REVIEW WILEY

## Smoke exposure and childhood atopic eczema and food allergy: A systematic review and meta-analysis

Hui Xing Lau<sup>1</sup> | Jia Wei Lee<sup>1</sup> | Qai Ven Yap<sup>2</sup> | Yiong Huak Chan<sup>2</sup> | Miny Samuel<sup>3</sup> | Evelyn Xiu Ling Loo<sup>1,4,5</sup>

Journal of Medical Mycology 33 (2023) 101362

Contents lists available at ScienceDirect

Journal of Medical Mycology

journal homepage: [www.elsevier.com](http://www.elsevier.com)

Research Paper

## Efficacy and safety of echinocandin monotherapy and combination therapy for immunocompromised patients with systemic candidiasis: A systematic review and meta-analysis

Brenda Hui En Tang<sup>1,\*</sup>, Jia Wei Bay<sup>1</sup>, Foong May Yeong<sup>1</sup>, Miny Samuel<sup>3</sup>

<sup>1</sup> Yong Loo Lin School of Medicine, National University of Singapore, 10 Medical Dr, Singapore 117597, Republic of Singapore  
<sup>2</sup> Department of Biochemistry, National University of Singapore, MD 7, 8 Medical Drive, Singapore 117596, Republic of Singapore

Tham et al. World Allergy Organization Journal (2023) 16:100770  
<http://doi.org/10.1016/j.waojou.2023.100770>

WORLD ALLERGY ORGANIZATION JOURNAL

Open Access

## A systematic review of quality and consistency of clinical practice guidelines on the primary prevention of food allergy and atopic dermatitis

Elizabeth Huiwen Tham, MRCPCH<sup>a,b,1</sup>, Agnes Sze Yin Leung, MRCPCH<sup>c,d,1</sup>, Kiwako Yamamoto-Hanada, MD, PhD<sup>e</sup>, Lamia Dahdah, MD<sup>f</sup>, Thulja Trikamjee, MD<sup>g</sup>, Vrushali Vijay Warad, MD<sup>h</sup>, Matthew Norris, MD<sup>i</sup>, Elsy Navarrete, MD<sup>j</sup>, Daria Levina, MD<sup>k</sup>, Miny Samuel, PhD<sup>l</sup>, Andre van Niekerk, MMed (Paed)<sup>m</sup>, Santiago Martinez, MD<sup>n</sup>, Anne K. Ellis, MD<sup>o</sup>, Leonard Bielory, MD<sup>p,q,r</sup>, Hugo van Bever, MD, PhD<sup>a,b</sup>, Dana Wallace, MD<sup>s</sup>, Derek K. Chu, MD, PhD<sup>t</sup>, Daniel Munblit, MD, PhD<sup>k,u</sup>, Mimi LK. Tang, MBBS, PhD<sup>v,w,x</sup>, James Sublett, MD<sup>y</sup> and Gary Wing Kin Wong, MD<sup>c\*</sup>

RESEARCH SUPPORT UNIT

## COCHRANE WORKSHOP 2024

Workshop 1: Basic Systematic Review & Meta-analysis Workshop  
08 – 12 July (5 half days)  
9am-1pm Zoom

Workshop 2: Network Meta-analysis (NMA) Workshop  
22 – 26 July (5 half days)  
9am-1pm Zoom

Our Speakers from Singapore Clinical Research Institute (SCRI)

Assoc Prof Edwin CHAN, Director, Cochrane Singapore, Chief Scientific Officer, SCRI  
Dr SHI Luming, Deputy Director, Cochrane Singapore, Head of Health Economics & Outcomes Research, SCRI  
Cochrane Singapore Staff: Dr GUO Liang, Dr Julie ZHU, Dr Brendon ZHOU, Ms CHAI Jia Hui

Workshop Fees (inclusive of GST)

Workshop 1 OR Workshop 2 (Individual Workshop)	\$763
Bundle (Workshop 1 + 2)	\$1,308

Discount of \$200!

Register now by scanning the QR Code!

Closing Date: 10th June 2024, Monday  
Contact: Ms Rafika at [rsu-nhs@nus.edu.sg](mailto:rsu-nhs@nus.edu.sg)

CRIS, S, SCRI academy, NUS

## BMJ Best Practice

Contributors:

Authors:

Fong Seng Lim, MBBS, MMed (FM), FAMS  
Senior Consultant, Department of Family Medicine, National University Health System, Singapore  
DISCLOSURES: FSL declares that he has no competing interests.

Miny Samuel, PhD  
Assistant Director, Research Support Unit, Yong Loo Lin School of Medicine, National University of Singapore, Singapore  
DISCLOSURES: MS declares that she has no competing interests.

Acknowledgements:

Dr Fong Seng Lim and Dr Miny Samuel would like to gratefully acknowledge Dr Richard A. Strick, Dr Jack Green, and Dr Paradi Mirman, previous contributors to this topic. RAS is an honorary member of the National Aspicia Azeita Foundation (NAAF) clinical scientific advisory board. JG is an author of a reference cited in this topic. PM declares that he has no competing interests.

Peer Reviewers:

Maria Hordinsky, MD  
Professor and Chair, Department of Dermatology, University of Minnesota, Minneapolis, MN  
DISCLOSURES: MH declares that she has no competing interests.

Ralph M. Trueb, MD  
Associate Professor, Department of Dermatology, University Hospital of Zurich, Zurich, Switzerland  
DISCLOSURES: RMT is an author of a number of references cited in this topic.

## Alopecia areata

Overview | Theory | Diagnosis | Management | Follow Up | Resources

Last reviewed: 4 Nov 2024 | Last updated: 23 Sep 2022

Summary

Alopecia areata is an autoimmune disease that targets the hair follicle. It is characterised by sudden onset of patchy hair loss. The diagnosis is clinical. Characteristic physical findings are exclamation mark hairs (short, broken hairs tapering proximally at the scalp) and a positive pull test. A scalp biopsy shows perifollicular inflammation. Topical or intrasessional corticosteroids are appropriate for patients with limited hair loss. Skin atrophy can be a temporary side effect.

Definition

Alopecia areata (AA) is an autoimmune disease that causes inflammation of the hair follicles resulting in non-scarring hair loss, affecting scalp and body hair [1,2]. Typically, one or more small round patch of hair loss without atrophy is noticed. This patchy hair loss may regrow.

Differential

- Trichotillomania
- Tinea capitis
- Telogen effluvium

More Differentials

Guidelines

## CS Spotlights

CS Academy seeks to feature our very own clinician scientists, where they share their research journeys and some interesting/lesser known facts about themselves. Click here to read their full stories: <https://medicine.nus.edu.sg/csa/cs-spotlight/>



Dr Nicholas Syn Li-Xun

**What has helped you get to where you are, and what advice would you give someone who wants to come in this direction?**

*Mentorship is the most crucial aspect. I would not have gotten to where I am now if I did not have a strong foundation. A good mentor genuinely wants you to grow to become an independent researcher, and they are selfless and never insecure, not wanting to “retain” you in order to benefit themselves; these are some characteristics you would want to do some homework about before approaching a mentor for the first time.*



Dr Dedrick Chan Kok Hong  
Specialty: Surgery

**Could you describe one of your typical workdays?**

*As a colorectal surgeon, I usually start with ward rounds. Some clinical duties tend to be fixed, such as clinic and endoscopy sessions, so these are predictable and experiments can be planned around them. On days when I have elective surgery, I never do experiments before as I prefer to be focused on the operation. Emergency surgery obviously takes priority over any research work, and if I had originally planned an experiment which is time-sensitive, then I may have to decide between abandoning and restarting the experiment, which is highly unpalatable, or staying back after surgery.*



Dr Daniel Huang Qingyao  
Specialty: Gastroenterology & Hepatology

**What is your research area? What prompted you to be a Clinician Scientist?**

*I work on the early detection and prevention of hepatocellular carcinoma in the setting of non-alcoholic fatty liver disease and viral hepatitis. I am looking at non-invasive strategies to risk stratify and detect chronic liver disease and hepatocellular carcinoma by leveraging advanced imaging- and RNA-based methods. I see many patients in my clinic who are in “evidence-free zones”. My hope is that I can help to fill in some of these gaps in knowledge and help a larger group of patients, beyond those in my clinics.*



Dr Stephannie Ko Qianwen  
Specialty: Advanced Internal Medicine

**Could you describe one of your workdays? What is the most gratifying part of being a Clinician Scientist?**

*A typical day is balancing between clinical duties, leading the NUHS@Home to scale up and driving the research team. I’ve had to learn to block out specific times for deep work - uninterrupted periods where I can focus on data analysis, grant or manuscript writing, or planning new studies. The most gratifying part is seeing our research translate into actual change in policy and practice, for example when the work that my team has published contribute to a policy shift to mainstream hospital-at-home in Singapore this year.*

# NUHS CS Academy Workshops

**NUHS Clinician Scientist Academy**  
**Talks by Prof Howard Bauchner**  
 Publishing in Influential Journals and Evolving Issues in Scientific Communication - 7 Feb '24 (5-7pm), NUHS TB T07-04  
 In this 2 hour seminar, Prof Bauchner will provide an in-depth insight on publishing in influential journals, from cover letter to request for revision.  
 DATA SHARING ENTERS A NEW ERA - 21 Feb '24 (6-7pm), NUHS TB T08-04  
 Data sharing is now mandated by US Government for all federal agencies and some other funders including Singapore NMRC. Prof Bauchner will discuss the difficult and controversial issues with this open science movement.  
 REFLECTIONS ON MENTORING - 28 Feb '24 (6-7pm), NUH TB T06-03  
 Prof Bauchner will discuss how career and research mentorship is different and why this is important for investigators to understand.



Prof Howard C. Bauchner  
 Professor of Pediatrics and Public Health, Boston University School of Medicine and Public Health  
 Editor in Chief of Archives of Disease in Childhood (2003-2011)  
 Editor in Chief, JAMA and the JAMA Network (2011-2021)



Register Now!




**Publishing In Influential Journal and Evolving Issues in Scientific Communications**  
 7 February 2024

**NUHS Clinician Scientist Academy**  
**DATA BOOTCAMP**  
 MINING THE DATA 'OIL' IN NUHS

**Host**  
 A/Prof Catherine Ong  
 Infectious Diseases, Medicine

**Speakers**  
 Dr Clara Ngoh  
 Medicine and AI0 Innovation Office  
 Ms Christine Wu  
 Analytics & Healthcare Research, NTFGH


**Aims**  
 1. To increase awareness of data vendors, and data stewardship among clinician-scientists and clinician investigators in our ecosystem and climate  
 2. To facilitate those who are looking for data sources

**Topics Covered**  
 • Infrastructure, Data Ecosystem and Access  
 • End-to-End Workflow for a new project  
 • Current data science & programme evaluation projects by NTFGH HSRA Department  
 • Sharing of data outside NUHS  
 • Moving forward: Self-Sufficiency vs. Collaboration

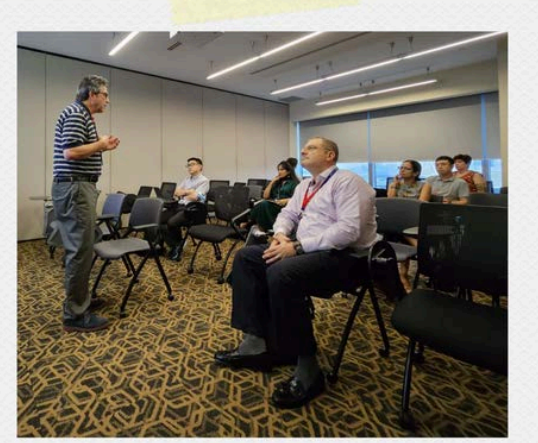
**Date:** 30 Aug 2024, 5:30 - 7:30pm  
**Venue:** NUHS Tower Block, T07-03



Scan to Register now:  
<https://forms.office.com/r/m9UAp7Rjx?origin=lprLink>  
 For enquires, please contact Ms. Jasmine Yong at [jasminey@nus.edu.sg](mailto:jasminey@nus.edu.sg)



**Data Bootcamp - Mining the Data 'Oil' in NUHS**  
 30 August 2024



Topic: Data Sharing Enters a New Era  
 21 February 2024

**NUHS Clinician Scientist Academy**  
**Manuscript Writing Workshop**  
 TIPS FOR WRITING YOUR FIRST PAPER - 8 Mar '24 (6-7pm)  
 Targeted at individuals early in their research career, Prof Bauchner will outline the ABCs for investigators submitting their first manuscript.  
**STRUCTURE OF A SCIENTIFIC (CLINICAL) MANUSCRIPT** - 30 Mar '24 (6-7pm)  
 In this session, Prof Bauchner will discuss the structure of a scientific manuscript for clinical investigators including the abstract, introduction, methods, results and discussion, including the length of each section and key components.



Prof Howard C. Bauchner  
 Professor of Pediatrics and Public Health, Boston University School of Medicine and Public Health  
 Editor in Chief of Archives of Disease in Childhood (2003-2011)  
 Editor in Chief, JAMA and the JAMA Network (2011-2021)

LOCATION: NUHS TOWER BLOCK (Exact location to be notified via email after registration)  
 FEE: \$60 PER SESSION



Register Now!

**NUHS Clinician Scientist Academy**  
**DEFINING RESEARCH EXCELLENCE**  
 JOIN US FOR A ZOOM SESSION

**TARGET AUDIENCE:**  
 • Clinicians and Allied Health Professionals & Academics  
 • Early to Mid-Career Academics

**TOPICS:**  
 • How to research quality, impact and innovation  
 • What should be your academic strategy  
 • What are the sources of funding for research  
 • Examples of advice

**OBJECTIVE:**  
 • Gain key research tips to be shared

**SPEAKERS**  
 Prof Tullia Motta  
 Prof Roger Fan  
 A/Prof Catherine Ong

**HOST**  
 Ms. Jasmine Yong

**DATE:** 13 AUG 2024  
**TIME:** 1.00pm - 2.00pm



Register Now!



Topic: Reflections on Mentoring  
 28 February 2024

**NUS Tracks for Academic Talents**  
 Faculty members are the bedrock of the university

<p><b>Tenure Track</b></p> <p>Advance the University's mission of education, research and service with a peak of excellence in research or education</p>	<p><b>Educator Track</b></p> <p>Excellent educators: Focus is on quality teaching, impact on student learning, leadership in teaching &amp; learning</p>
<p><b>Practice Track</b></p> <p>Scholar-practitioners: Professional or leadership expertise to complement academic perspectives in teaching and research</p>	<p><b>Research Track</b></p> <p>Support faculties and research institutes/centers through research of the highest quality and impact</p>



**3D Printing Essentials for Clinician-Scientists**  
 24 April 2024

**NUHS Clinician Scientist Academy**  
**Exploring the Frontier:**  
**3D PRINTING ESSENTIALS FOR CLINICIAN-SCIENTISTS**

**24 April 2024, 6-7pm**  
 MD11 Clinical Research Centre, MD11-01-10

**Workshop Summary**  
**Fundamentals of 3D Printing:**  
 • Importance of rapid prototyping in clinical and scientific research.  
 • Explanation of 3D printing principles, processes, and materials.  
 • Overview of different types of 3D printers and their capabilities.  
**Applications in Healthcare:**  
 • Showcase of case studies highlighting 3D printing applications in medical fields.  
 • Discussion on the benefits and challenges of using 3D printing for medical devices, prosthetics, and anatomical models.  
**Hands-On Demonstration:**  
 • Practical demonstration of 3D printing process from design to fabrication.

This workshop content aims to provide participants with a comprehensive understanding of 3D printing technology, its applications in healthcare and research, hands-on experience in prototyping, and guidance on integrating 3D printing into their own projects.

**TRAINERS**  
 Mr Chuah Wei Chieh  
 Research Engineer (AM Development)  
 Mr Chong Zi En  
 Research Engineer (Industrial Design)



REGISTER NOW

Contact Us: [cs\\_academy@nus.edu.sg](mailto:cs_academy@nus.edu.sg)

# NUHS CS Academy Workshops in collaboration with NUS Medicine

**JOIN US**  
**FIRESIDE CHAT**  
 With Guest Lecturer  
**Prof. Annie Huang**

Join us for a special guest lecture by Prof. Annie Huang, a trailblazer in pediatric brain tumor research from The Hospital for Sick Children (SickKids) and the University of Toronto. Discover unique insights into cutting-edge research and innovative therapies transforming pediatric oncology.

Prof. Huang will also share her inspiring life and career journey, providing invaluable guidance to students and junior clinicians on navigating their paths in biomedical research. Don't miss this opportunity to learn from a leading figure in pediatric oncology!

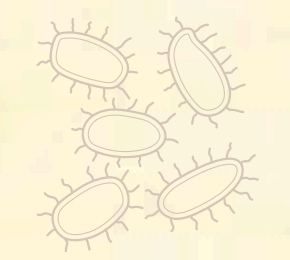
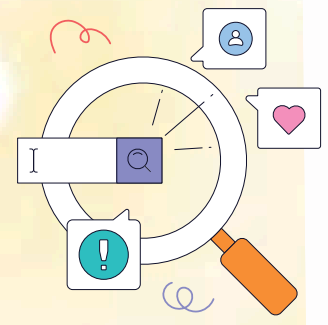
Check out the following articles by Prof. Annie Huang in the meantime:

- Li, M., et al., A. Huang, (Frequent amplification of a chr19q13.41 microRNA polyclon in aggressive primitive neuroectodermal brain tumors) *Cancer Cell* (2024)
- Picard, D., et al., A. Huang, (Markers of survival and metastatic potential in childhood CNS primitive neuroectodermal brain tumors: An integrative genomic analysis) *The Lancet Oncology* 2022
- Torchia, J., et al., A. Huang, (Integrated (EP)-genomic analyses identify subgroup-specific therapeutic targets in CNS (rhabdoid tumor) Cancer Cell 2016.

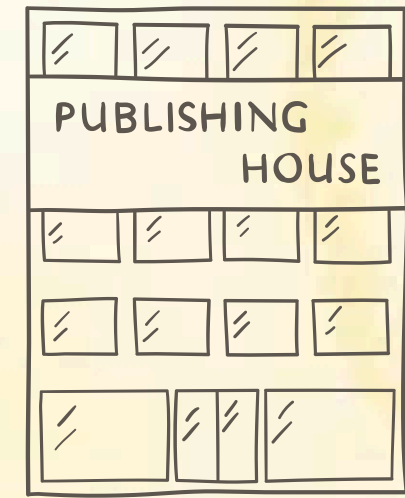
**ENGAGING CONVERSATION**  
**SAVE THE DATE & TIME**

15th August  
 5:30 - 7:00 pm  
 MD9-01-02H  
 MD9 Physiology

For more information email us at [nusmedgss@u.nus.edu](mailto:nusmedgss@u.nus.edu) Sign up now



**Foundation Models in Medicine**  
 (In collaboration with NUSMed Centre for Innovation and Precision Eye Health)  
 23 August 2024



**Event Details**  
 October 24, 2024  
 Thursday, 4:30-6pm  
 NUHS Tower Block, #11-03  
 1E Kent Ridge Road, 119228

**FOOD & REFRESHMENTS PROVIDED**

**Fireside chat**  
**PUBLISHING FOR IMPACT**  
**THE LANCET'S DR JESSAMY BAGENAL**

Join Dr. Jessamy Bagenal for an insightful fireside chat at NUS Yong Loo Lin School of Medicine. Dr Bagenal sits on the Lancet's senior management team, leads the clinical strategy, and champions open access and research integrity policies. She is driven by a commitment to improve the health of both people and the planet.

**Dr Jessamy Bagenal**  
 Senior Executive Editor at The Lancet

**Register Now**  
 Limited seats!

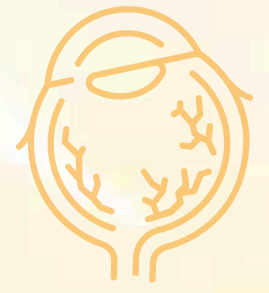
also at [medicine.nus.edu.sg/cosm](https://medicine.nus.edu.sg/cosm)

Hosted by **CoSM**, **NUS**, and **NUHS Clinician Scientist Academy**.

**THE LANCET**



**Fireside Chat with Prof Annie Huang**  
 (In collaboration with NUS Medicine Graduate Student Society)  
 15 August 2024



Centre for Innovation and Precision Eye Health & Yong Loo Lin School of Medicine

**FOUNDATION MODELS IN MEDICINE: LESSONS FROM OPHTHALMOLOGY**

**ABOUT FOUNDATION MODELS**  
 Foundation models are large-scale AI models trained on vast amounts of unlabeled data, allowing them to be adapted to various downstream tasks. These models provide general-purpose feature representations that can be fine-tuned for specific applications, significantly reducing the need for extensive labelled datasets. They offer improved performance and generalization across different tasks, making them valuable for diverse applications in AI and healthcare.

**ABOUT THE SPEAKER: PROF PEARSE KEANE**  
 Pearse Keane is Professor of Artificial Medical Intelligence at UCL Institute of Ophthalmology, and a consultant ophthalmologist at Moorfields Eye Hospital, London. In 2016, Prof Keane initiated a collaboration between Moorfields Eye Hospital and Google DeepMind, with the aim of developing artificial intelligence algorithms for the earlier detection and treatment of retinal disease. In August 2018, the first results of this collaboration were published in the journal, *Nature Medicine*. In May 2020, he jointly led work, again published in *Nature Medicine*, to develop an early warning system for age-related macular degeneration (AMD), by for the commonest cause of blindness in many countries. In 2023, he led the development of **RETFound**, the first foundation model in ophthalmology, published in *Nature* and made available open source. In 2022, he was listed in the "Top 10" of the "The Power List" by The Ophthalmologist magazine, a ranking of the Top 100 most influential people in the world of ophthalmology <https://theophthalmologist.com/power-list/2022>.

**Explore his notable publications for more details:**  
 1. Zhou, Keane (2023) A foundation model for generalizable disease detection from retinal images. *Nature*.  
 2. Yim, Ledam, Keane & De Fauw (2020) Predicting conversion to wet age-related macular degeneration using deep learning. *Nature Medicine*.  
 3. De Fauw, Keane & Bornnberger (2018) Clinically applicable deep learning for diagnosis and referral in retinal disease. *Nature Medicine*.

**When: Friday, 23 August 2024, 10-2pm.** Attendance registration starts at 11:45am.  
**Venue: MD1 Clinical Research Centre Auditorium, National University of Singapore.**  
 Access map: <https://map.nus.edu.sg/getting-to-md1>  
**Free admission.** Registration is compulsory.  
 Register now at <https://lnovot.com/23AugKeane> or access this QR code:  
 Register now at <https://lnovot.com/23AugKeane> or access this QR code:  
 (Limited seating available. Registration on first-come first-served basis.)  
 For any other enquiries, please email: [lu\\_yanan@nus.edu.sg](mailto:lu_yanan@nus.edu.sg) or [tkes22@nus.edu.sg](mailto:tkes22@nus.edu.sg)



**Publishing for Impact**  
 (In collaboration with NUSMed Centre for Sustainable Medicine)  
 24 October 2024





# Saturday Research Trainings



Managing Member  
Grant Writers' Seminars & Workshops

*John D. Robertson*

## Getting Started Winning NMRC Grants



### TALK DETAILS

#### Repeated Sessions

(^Register for **one** session only)

- ✓ April 27, 2024 (9-11am)
- ✓ May 25, 2024 (9-11am)
- ✓ June 29, 2024 (9-11am)

The session will be held on Zoom. The Zoom link will be provided closer to the date.

### REGISTRATION DETAILS

- ✓ Fee: \$90 (inclusive of a copy of "The Grant Application Writer's Workbook")



Register Now!

Note: There will not be any fee refund for any cancellation after payment is made.

Contact us: [cs\\_academy@nus.edu.sg](mailto:cs_academy@nus.edu.sg)

NUHS Clinician  
Scientist Academy

NUHS Clinician Scientist Academy

## SATURDAY RESEARCH TRAINING SERIES



**Dr Diego P. Araujo**  
Senior Assistant Manager, Scientific Illustration, RSU

### WHAT MAKES GOOD FIGURES FOR PUBLICATIONS? INSIGHTS FROM VISUAL STORYTELLING AND GRAPHIC DESIGN

In this talk, Dr Diego will present some elements of visual storytelling and how to apply them to produce scientific figures for academic publications. The main objective is to motivate the development of visual thinking, how to organize ideas into figures, sketches and concepts, how to convert massive information into a single illustration, and how to make an informative and engaging figure.

27 January 2024  
9 - 10 AM, via Zoom

Note: This talk will provide theoretical insights. Hands on training workshops will be conducted in future dates.

**REGISTER NOW**  
CME POINTS WILL BE AWARDED (FOR DOCTORS ONLY)

NUHS Clinician Scientist Academy

## SATURDAY RESEARCH TRAINING SERIES



**Mr Lin Yuchen**  
Manager, Clinical Operations, Investigational Medicine Unit, NUH

### CLINICAL TRIAL START-UP AND BUDGETING - WHAT A HEADACHE!

In this talk, we will run through the processes and requirements necessary to successfully kick-off a clinical trial. We will also take a look at a basic budgeting technique used by NUHS IMU.

24 February 2024  
9 AM - 10 AM, via Zoom

**REGISTER NOW**  
CME POINTS WILL BE AWARDED (FOR DOCTORS ONLY)

NUHS Clinician Scientist Academy

## SATURDAY RESEARCH TRAINING SERIES



**Dr Ang Huiying**  
Associate Director, Technology Transfer and Innovation (TTI) Office, NUS

### NAVIGATING IP PROTECTION AND STRATEGIC INDUSTRY PARTNERSHIPS

What is intellectual property? How can I protect my inventions? There are so many aspects of innovation to consider and the path to commercialisation may not always be so direct. Partnering with established industry players is also key to translating healthcare innovations into the market place.

30 March 2024  
9 - 10 AM, via Zoom

Join Dr Ang Huiying, Tech and Commercialisation Lead at NUS Enterprise, in taking a deep dive into developing robust IP strategies and leveraging on industry partnership in your innovation journey. We will also look at the funding and resources provided by NUS Enterprise, whether you are seeking to create a spin-off company or license your technology to the industry.

**REGISTER NOW**  
CME POINTS WILL BE AWARDED (FOR DOCTORS ONLY)

NUHS Clinician Scientist Academy

## SATURDAY RESEARCH TRAINING SERIES



**Dr Shen Liang**  
Head of Biostatistics Unit, Research Support Unit, NUS YLLSOM

### INTRODUCTION TO CLINICAL RESEARCH METHODOLOGY AND SAMPLE SIZE CALCULATION

This talk aims to provide the basic knowledge of designing a clinical study, concepts of inferential statistics, and sample size calculation, to the junior clinical research scientist.

27 July 2024  
9 AM - 12 PM, via Zoom

**REGISTER NOW**  
CME POINTS WILL BE AWARDED

NUHS Clinician Scientist Academy

## SATURDAY RESEARCH TRAINING SERIES



**Dr Miny Samuel**  
Assistant Director, Systematic Review Research Support Unit, NUS YLLSOM

### INTRODUCTION TO WRITING A SYSTEMATIC REVIEW FOLLOWING COCHRANE METHODS

This talk will help you understand the distinguishing features of a systematic review compared to other types of reviews; give you an overview of the different resource guidelines for conducting a systematic reviews; facets of question development; and the accepted methodology and tools to facilitate the systematic review process.

28 September 2024  
9 - 10:30 AM, via Zoom

**REGISTER NOW**  
CME POINTS WILL BE AWARDED

NUHS Clinician Scientist Academy

## SATURDAY RESEARCH TRAINING SERIES



**Dr Yong Wei Peng**  
Chairperson, NHG Domain Specific Review Board, Associate Director (Research) & Senior Consultant, NCIS

### HOW TO BE SUCCESSFUL IN MY DSRB APPLICATION FIRST TIME ROUND

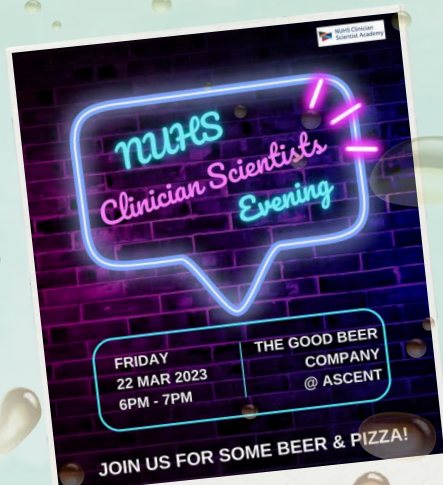
Getting IRB approval is an essential step before initiation of any clinical trials. The talk will provide useful tips to get it right the very first time.

26 October 2024  
9 AM - 10 AM, via Zoom

**REGISTER NOW**  
CME POINTS WILL BE AWARDED

## Networking Sessions

### NUHS CS Evening



22 Mar 2024

### Outreach Roadshows

NTFGH Roadshow  
7 Mar 2024



Ng Teng Fong General Hospital | Jurong Community Hospital | NUHS Clinician Scientist Academy

#### WEBINAR RESEARCH ROADSHOW

Research Support Services  
Jointly organized by NUHS CIA, JHC OR & JHC CRU

Sharing by:  
 > NUHS Clinician Scientist Academy  
 > JHC Clinical Research Unit  
 > JHC Analytics team

1.00pm: NUHS-Clinician Scientist Academy: How we can support you in your research career  
 1.25pm: JHC CRU: How CRU can help with the planning and administration of your research  
 1.35pm: JHC Analytics Team: Research Support Services for Designing Analytics/AI Solutions for Clinical Questions  
 1.50pm: Q & A  
 2.00pm: End of Roadshow

March 07, 2024 (Thursday)  
1:00 PM to 2:00 PM

Secure your spot now for the roadshow to see how the various research support services can empower your research!

Scan the QR Code to register for the Zoom Webinar



A\*STAR Roadshow 29 April 2024

### Residency Open House



20 July 2024



## Focus Group Engagement

### Head of Departments



### Data Engagement



### National Clinician-Scientists



## Focus Group Engagement

### Assistant Professors (Non-Clinical)

**NUHS Clinician Scientist Academy**

## Breakfast Engagement

**Invitation to Non-clinical Assistant Professors**

An informal engagement session where Prof Roger and A/Prof Xinyi will share on the topic "What are the well funded research programmes in NUHS".

**23 May 2024 (Thu), 7.30am - 9am**  
**MD6, Level 9 Room 09-01T**

Research is a core business for our school. New and young faculty among us may wonder how and where they can start with research around here. Knowing the strengths of well-funded and strategic programmes may help to start from a higher place, or show the need to build from the ground where the gaps still are. Come for an opportunity also to network with each other.

**Prof Roger Foo**  
 • Zayed bin Sultan Al Nahyan Professor of Medicine  
 • Director, NUHS Cardiovascular Metabolic Disease TRP  
 • Vice Dean (Research), NUS Medicine  
 • Head, NUHS Clinician Scientist Academy

**A/Prof Su Xinyi**  
 • Executive Director, IMCB  
 • Senior Consultant, Vitreo-retinal Surgeon, NUH  
 • Assoc Prof & Co-Director, Centre of Innovation and Precision Eye Health, NUS  
 • Deputy Head, NUHS Clinician Scientist Academy

**SCAN ME**  
<https://forms.office.com/r/7GZevqHL41>

23 May 2024

### NCSP2.0 Awardees



3 July 2024

### Lunch with Dossier Writer



27 August 2024

# NUHS CS Academy Retreat (Meeting)

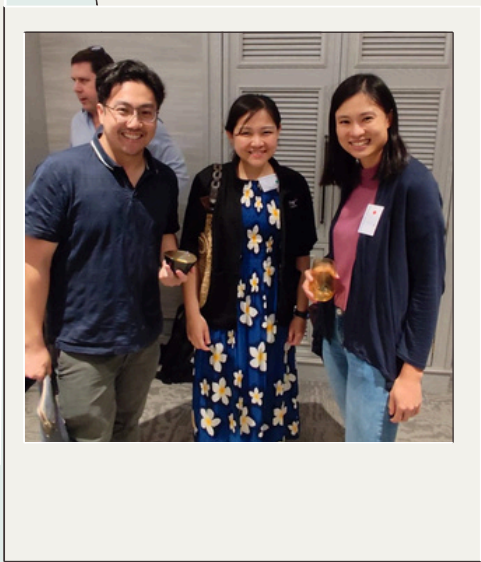
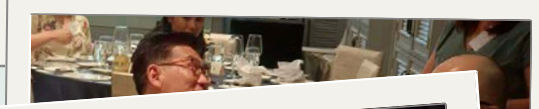
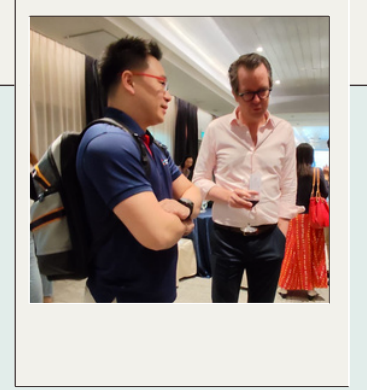


30 Nov 2024

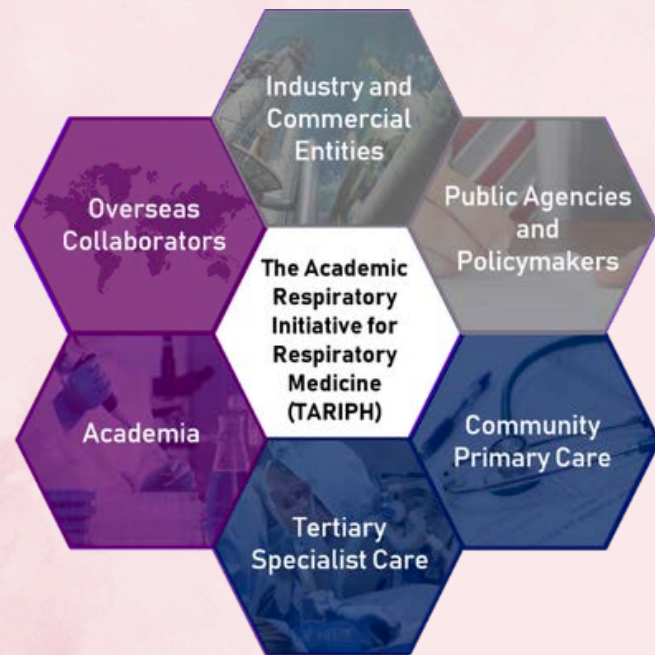


# NUHS CS Academy Retreat (Dinner)

30 Nov 2024



# 2024 Grants in NUHS: NMRC Open Fund - Large Collaborative Grant



## *The Academic Respiratory Initiative for Pulmonary Health (TARIPH).*

NUH: Dr Matthew Edward Cove (Theme PI)

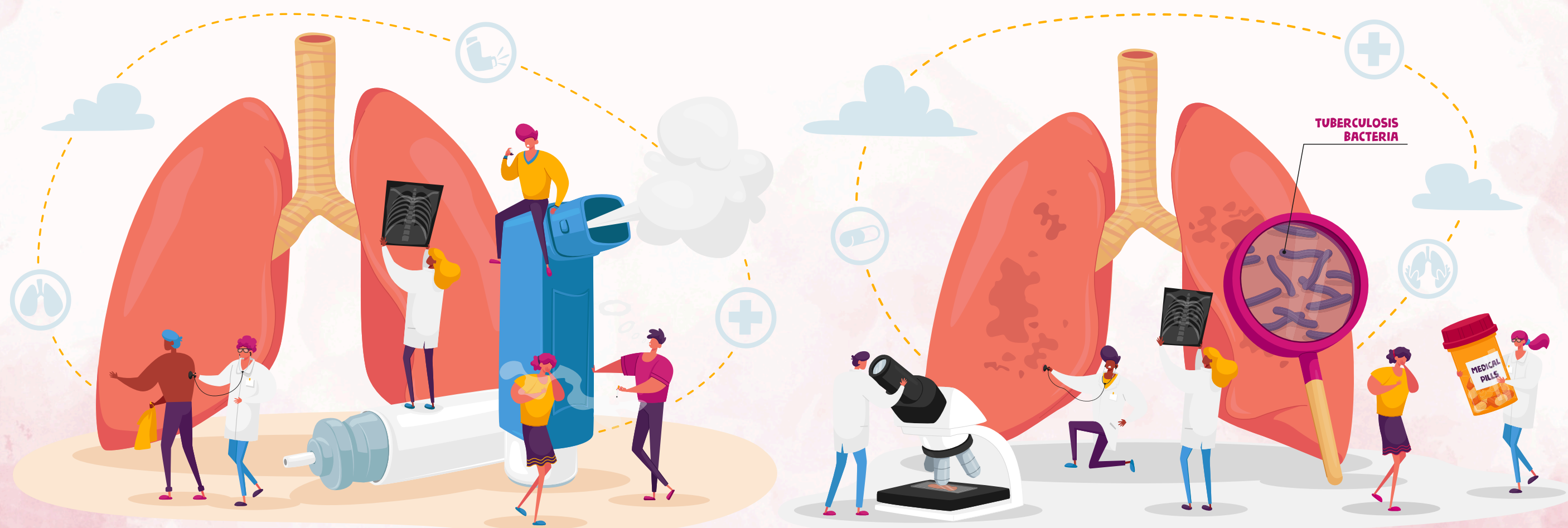
NTU: A/Prof Sanjay Haresh Chotirmall (Lead PI)



Dr Matthew Cove



A/Prof Sanjay Chotirmall



## 2024 Grants in NUHS: MOE Tier 3

***The eMEASURE-RNA initiative: exploring the molecular basis of RNA editing, sensing and immune response - new approaches for immuno-oncology therapy.***

NUS: A/Prof Chen Leilei (Lead PI)



A/Prof Chen Leilei





## 2024 Impactful Publications in NUHS: Articles in top 1% SJR ranking

***Establishing healthy longevity clinics in publicly funded hospitals.***

Last Author: Prof Andrea Britta Maier

Journal Title: GeroScience



***Testing the amount of nicotinamide mononucleotide and urolithin A as compared to the label claim.***

Last Author: Prof Andrea Britta Maier

Journal Title: GeroScience

***The impact of mobility limitations on geriatric rehabilitation outcomes: Positive effects of resistance exercise training (RESORT).***

Last Author: Prof Andrea Britta Maier

Journal Title: Journal of Cachexia, Sarcopenia and Muscle

***The association between blood biological age at rehabilitation admission and physical activity during rehabilitation in geriatric inpatients: RESORT.***

Corresponding Author: Prof Andrea Britta Maier

Journal Title: GeroScience

## 2024 Impactful Publications in NUHS: Articles in top 1% SJR ranking

***A glycolytic metabolite bypasses “two-hit” tumor suppression by BRCA2.***

Corresponding Author: Prof Ashok Venkitaraman

Journal Title: Cell



Dr Bernice Oh



Prof Dario Campana



Prof Allen Yeoh

***Fratricide-resistant CD7-CAR T cells in T-ALL.***

First Author: Dr Bernice Oh Lingzhi

Last Author: Prof Dario Campana

Corresponding Author: Prof Allen Yeoh

Journal Title: Nature Medicine

***Combined aerobic and strength exercise training on biological ageing in Singaporean breast cancer patients: protocol for the Breast Cancer Exercise Intervention (BREXINT) Pilot Study.***

Last Author: Dr Goh Jor Ming

Journal Title: GeroScience



## 2024 Impactful Publications in NUHS: Articles in top 1% SJR ranking

***Antiviral Therapy Utilization and 10-Year Outcomes in Resected Hepatitis B Virus- and Hepatitis C Virus-Related Hepatocellular Carcinoma.***

First Author: Dr Huang Qingyao, Daniel

Journal Title: Journal of Clinical Oncology



***Meta-analysis: Prevalence and impact of alcohol abstinence in alcohol-associated cirrhosis.***

Last Author: Dr Huang Qingyao, Daniel

Journal Title: Alimentary Pharmacology and Therapeutics



***Imaging lifespan brain structural growth: From region, to connectome, to gradient.***

Last Author: A/Prof Zhou Juan, Helen

Journal Title: PLoS Biology

***Principal component-based clinical aging clocks identify signatures of healthy aging and targets for clinical intervention.***

Corresponding Author: A/Prof Jan Gruber

Journal Title: Nature Aging



## 2024 Impactful Publications in NUHS: Articles in top 1% SJR ranking

***Single-cell landscape of functionally cured chronic hepatitis B patients reveals activation of innate and altered CD4-CTL-driven adaptive immunity.***

Corresponding Author: Prof Lim Seng Gee

Journal Title: Journal of Hepatology



***Managing nurse redeployment during the Covid-19 pandemic, lessons for future redeployment: A qualitative study.***

Corresponding Author: A/Prof Michael Charles Dunn

Journal Title: International Journal of Nursing Studies

***Individualised, short-course antibiotic treatment versus usual long-course treatment for ventilator-associated pneumonia (REGARD-VAP): a multicentre, individually randomised, open-label, non-inferiority trial.***

Corresponding Author: Dr Mo Yin

Journal Title: The Lancet Respiratory Medicine



## 2024 Impactful Publications in NUHS: Articles in top 1% SJR ranking

***Asparagine Synthetase Marks a Distinct Dependency Threshold for Cardiomyocyte Dedifferentiation.***

Corresponding Author: Prof Roger Foo Sik Yin

Journal Title: Circulation



***Genome-Wide CRISPR Screen Identifies an NF2-Adherens Junction Mechanistic Dependency for Cardiac Lineage.***

Corresponding Author: Prof Roger Foo Sik Yin

Journal Title: Circulation



***The effectiveness of Parentbot - a digital healthcare assistant - on parenting outcomes:  
A randomized controlled trial.***

Last Author: A/Prof Shefaly Shorey

Journal Title: International Journal of Nursing Studies

## 2024 Impactful Publications in NUHS: Articles in top 1% SJR ranking



***Engineering a Metal Reductase for the Bioremediation of Anthropogenic Electronic Wastes: From Hg(II) to Au(III) and Ag(I) Enzymatic Reduction.***

Last Author: A/Prof Yew Wen Shan

Journal Title: JACS Au

***Healthy dietary patterns are associated with exposure to environmental chemicals in a pregnancy cohort.***

Last Author: Prof Zhang Cuilin

Journal Title: Nature Food



***Lifetime Duration of Breastfeeding and Cardiovascular Risk in Women With Type 2 Diabetes or a History of Gestational Diabetes: Findings From Two Large Prospective Cohorts.***

Last Author: Prof Zhang Cuilin

Journal Title: Diabetes Care

## 2024 looking into 2025

“

**Research:  
No pain no gain!**

*Dr Daniel Huang*



”

“

**Nothing in life is worth  
having if it isn't difficult.**

*Dr Sarah Li*



”

## 2024 looking into 2025

***Cells are like individuals; some influence their neighbours to become bad, whilst others cooperate to make the microenvironment a more conducive place. May the CS Academy be our little T75 flask, each of us supplementing growth factors for the good of the community!***

Dr Dedrick Chan





## 2024 looking into 2025

***In the words of Taylor Swift, “If you’re being met with resistance, that probably means doing something new. If you’re experiencing turbulence or pressure, that probably means you’re rising.” Let us all keep paving new roads and improving further towards our goals in 2025.***

Dr Shawn Lee



## 2024 looking into 2025

***2024 has been a year of groundbreaking discoveries and remarkable innovations for CS Academy. As we look ahead to 2025, let's set our sights on implementation—transforming vision into reality. Here's to another exciting year to inspire health!***

*Dr Tham Yih Chung*



## 2024 looking into 2025

***Most of the time people are more willing to help than what we thought they would.***

A/Prof Luo Nan



***Never stop learning,  
never stop seeking,  
never stop trying,  
never stop dreaming.***

A/Prof Chua Horng Ruey



## 2024 looking into 2025

***In the intersection of care and inquiry, we harness the transformative power of knowledge and compassion to change lives. I eagerly anticipate our collaborative efforts to translate science and evidence from the bench to the bedside and beyond – into our hospitals, homes, and communities. By involving patients and colleagues alike, we can ensure diversity, inclusivity, and equity at every level of our research planning, execution, and dissemination.***

A/Prof Shefaly Shorey



## 2024 looking into 2025

“

***To better use what we know  
to explore and exploit what  
we are yet to know.***

Prof Michael Chee



”

## Message from the Head of CS Academy

5th December 2024

It is early morning and I am writing this message amidst the flurry of WhatsApp messages on the NUHS Clinician-Scientist Academy chat on the flaws of the existing publishing culture. Elsewhere for example on social media, opinions would have turned into personal attacks. Here we have a beautiful resource that we, the NUHS community, have cultivated. This is evidence of a healthy discourse in an academic environment to develop our research community which should be encouraged and embraced.

In a world where metrics are easy to measure and prize, it is so easy to lose focus. We need to remember that **“When a metric becomes a target, it ceases to be a good metric.”** We have to continue to focus on growing the next generation of excellent clinician researchers. The fruit of cultivation of excellent clinician researchers is research excellence. The fruit of research excellence is translation of research to benefit humanity.

As the 2024 draws to a close, let us continue to water our growing community with ideas, sun and air them with robust discussions as we grow our fruits.

Best wishes,

*Catherine*

Associate Professor Catherine Ong  
Head, NUHS Clinician-Scientist Academy

