



MASTER OF SCIENCE IN
**INFECTIOUS
DISEASE
EMERGENCIES**



Centre for Infectious Disease
Emergency Response
Yong Loo Lin School of Medicine

Director's Message

“ Welcome to the NUS Master's Degree Programme in Infectious Disease Emergencies. Led by faculty at the Centre for Infectious Disease Emergency Response (CIDER), Yong Loo Lin School of Medicine, and partnered with local and international experts, we will deliver a world class, first of its kind programme to develop outbreak responders for future infectious disease emergencies. In the wake of the COVID-19 pandemic, there is a global demand for improved systems to build resilience to future infectious disease emergencies. Our programme is designed for early to mid-career professionals, at national, subnational, or institutional levels, as well as specialists in various aspects of outbreak response, offering comprehensive skills and knowledge to lead in this evolving field.

Take the next step in your career by becoming part of our first cohort in July/August 2025 and help shape the future of global health.

Professor Dale Fisher
Programme Director,
MSc Infectious Disease Emergencies



Why Choose NUS Medicine?

As a global leader in education, the National University of Singapore (NUS) is placed in the top 8 universities worldwide and first in Asia by the latest QS World University Rankings. The NUS Yong Loo Lin School of Medicine (NUSMED) in particular ranks 1st in Asia for medical education by QS. It has a long-standing tradition of providing top-notch medical and health sciences education, boasting cutting-edge research and exceptional faculty, standing at the forefront of training medical professionals. Its global reputation and international outlook make a master's degree from NUSMED highly valued. Our master's course provides an innovative approach emphasising experiential learning and real-world application, utilizing advanced facilities and our global network to prepare students for the complex challenges of modern healthcare.

NUSMED goes beyond academics, fostering holistic development by nurturing leadership, critical thinking, and innovation, ensuring graduates possess the skills and confidence to make meaningful contributions to the field.

For professionals ready to make an impact, this programme offers a unique opportunity to gain targeted knowledge, skills, and connections necessary to lead and innovate in the rapidly evolving field of infectious disease emergencies.

Who Should Apply?

This programme is ideal for local and international postgraduate students. It will provide learners with advanced knowledge in preparing for and responding to infectious disease emergencies. Our curriculum combines rigorous academic study with practical, real-world applications.



Graduate Career Opportunities

Our graduates will be well-positioned to pursue a variety of exciting and impactful career paths. They may take on roles in policymaking and emergency planning within government agencies and health ministries or step into leadership positions in public health departments, hospitals, and healthcare systems. Graduates will also be well-prepared for international roles that require specialised expertise in pandemic preparedness and global health security. For those interested in academia, research institutions and universities provide further opportunities. Skills in surveillance, modelling, and interventions, coupled with strong leadership and communication training, equip graduates for diverse roles within health systems management.

What Makes MSc IDE Unique?

The MSc IDE programme integrates critical topics relevant to preparedness and response to infectious disease emergencies. We will leverage on experience from local and global outbreaks including the COVID-19 pandemic to provide unique perspectives. Coursework will be contextualised to students' home countries. Our faculty boasts experts of regional and international repute eager to share their experience and knowledge.

Our novel programme schedule combines in-person and virtual learning opportunities which supports students in balancing at-home commitments with the MSc IDE. This hybrid approach enables interaction with expert international and local faculty, foster practical skills, and facilitate professional networking.

Programme Overview

The MSc in Infectious Disease Emergencies programme is a coursework-based programme that can be completed in 1 year (full-time) or 2 years (part-time). To graduate, students must complete 40 units of coursework.

Core Courses

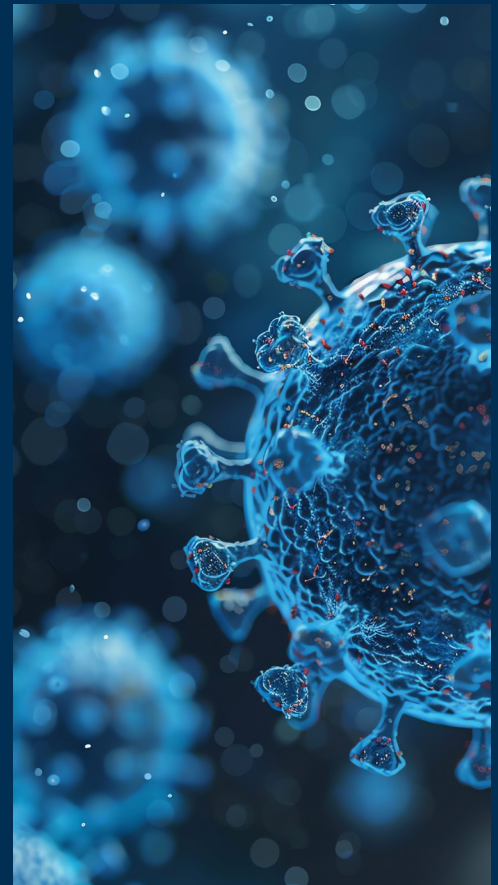
3 compulsory courses, 4 units each (12 units total)

- Leadership and Coordination
- Surveillance and Epidemiology
- Communications and Engagement in a Crisis

Elective Courses

Choose 7 out of 8 offered courses, 4 units each (28 units total)

- Clinical Management, IPC, and Facility Infrastructure
- Interventions for Outbreak Control
- Research in a Pandemic
- Mental Health and Support for the Vulnerable
- Laboratory
- Training for Outbreak Response
- Outbreak Prone Pathogens
- Infectious Disease Emergency Response Modelling



**Face-to-Face
Engagement**



**Virtual Engagements, Faculty
Support and Self-Directed Study**

These courses each have rich evidence based and practical content as well as cross cutting threads of leadership, ethics and law, which add unique insights and prepares candidates with skills valid beyond infectious disease emergencies.

This programme blends both in-person and virtual learning opportunities. The full-time track spans two semesters, each starting with three weeks of intense in-person engagement, followed by virtual sessions, faculty support, and self-directed study. Each semester then concludes with two weeks of in-person learning to consolidate knowledge. The programme emphasises adult learning styles supported by conventional didactic methods, facilitating engagement and network building.

Core Courses



Leadership and Coordination

This course will enable students to develop their own leadership skills by understanding different styles of leadership and how they can be applied. Leaders facing outbreaks need to adeptly coordinate the many pillars of response in the health and non-health sectors (public and private). A close link with operational logisticians and knowledge of current and future technologies in supply chain management will enable effective coordination.



Surveillance and Epidemiology

This course will explore the cause, prevention, and control of infectious disease emergencies (IDEs) through considering the epidemiologic triad of host, agent, and environment. Students will acquire knowledge of field epidemiological methods used for outbreak data analysis and understand how this informs public health interventions. The course will also equip learners with the skills to interpret surveillance data, conduct risk assessments, and understand key components of designing surveillance systems. Additionally, a One Health ecosystem approach will be used to address the complexities of urban epidemiology.



Communications and Engagement in a Crisis

This course will cover the key elements of preparing for and delivering comprehensive and impactful communications to effectively manage crises and engage with various audiences, including risk communication and community engagement (RCCE), information management, stakeholder engagement, media management, and media training.

Course Leads



Prof Dale Fisher

Programme Director
Yong Loo Lin
School of Medicine



Dr Claire Canning

Education Specialist
Yong Loo Lin
School of Medicine



Dr Louisa Sun

Deputy Programme Director
Yong Loo Lin
School of Medicine



Dr Dariusz Olszyna

Yong Loo Lin
School of Medicine



Dr Sean Wu

Yong Loo Lin
School of Medicine



A/Prof David Allen

Yong Loo Lin
School of Medicine



Dr Maleena Suppiah Cavert

Chief of Learning & Culture
Tsao Foundation



Prof Alex Cook

Saw Swee Hock
School of Public Health



Dr Gao Qi

Saw Swee Hock
School of Public Health



Dr Mo Yin

Saw Swee Hock
School of Public Health



Prof Benjamin Ong

Yong Loo Lin
School of Medicine



A/Prof Steven Ooi

Saw Swee Hock
School of Public Health



Prof David Paterson

Saw Swee Hock
School of Public Health

Admission Requirements

Applicants must fulfil the following requirements to be eligible for enrolment in the programme. However please note that selection of candidates is competitive and meeting the minimum requirements does not guarantee automatic admission into the programme.

Academic Qualifications

Graduates with bachelor's degrees in MBBS, or health sciences related discipline. Candidates with other qualifications and relevant industry experience may be considered on a case-by-case basis.

Professional Experience

Undergraduate Medical Degree

- One year of general clinical experience, excluding housemanship for Singapore-trained doctors
- One year of work experience in public health / health administration / occupational and environmental health or having entered clinical specialty training

Undergraduate Non-Medical Degree

- Two years of work experience in public health / health promotion / health administration / occupational and environmental health / clinical research / other related fields

Language Proficiency

Proficiency in conversational English is essential. For applicants whose native tongue and medium of university instruction is not completely in English:

- Test of English as a Foreign Language (TOEFL) minimum score of 85 (Internet-based), or
- International English Language Testing System (IELTS) minimum Academic score 6.0

(Note: TOEFL / IELTS scores are valid for two years from the test date and should not have expired at the point of application. Expired scores will not be considered for the application.)

Application Documents

Applicants should note that the following are key documents required, although additional items may be necessary according to the application checklist:

- Statement of Intent of not more than 300 words and upload it as a document in Word or PDF format. The statement should showcase your academic strength, professional interests, motivation to study and long-term development goals.
- Curriculum Vitae (CV): An overview of your relevant experiences, skills, qualifications and accomplishments.

Tuition Fees and Rebates

Tuition Fees (GST inclusive):

S\$54,500

Standard Fee

S\$32,700

Singapore Citizens and PRs

S\$43,600

International NUS Alumni

Rebates are available: Singapore Citizens and Permanent Residents receive 40% off on the standard fee, while International NUS Alumni are eligible for 20%.

Application Timeline

Applications open: 1st November 2024

Applications close: 30th April 2025

Applications will be assessed on a rolling basis as received.



Scan here to express interest for this programme. You'll receive application instructions, including a checklist to guide you through the process.



Centre for Infectious Disease
Emergency Response
Yong Loo Lin School of Medicine

Further Enquiries

For any more required information or queries, please email us at the address below.

Centre for Infectious Disease Emergency Response

Address: Yong Loo Lin School of Medicine, NUHS Tower Block,
Level 11, 1E Kent Ridge Road, Singapore 119228

Email: cider@nus.edu.sg

For more information: <https://medicine.nus.edu.sg/cider/education>



Visit Our Website