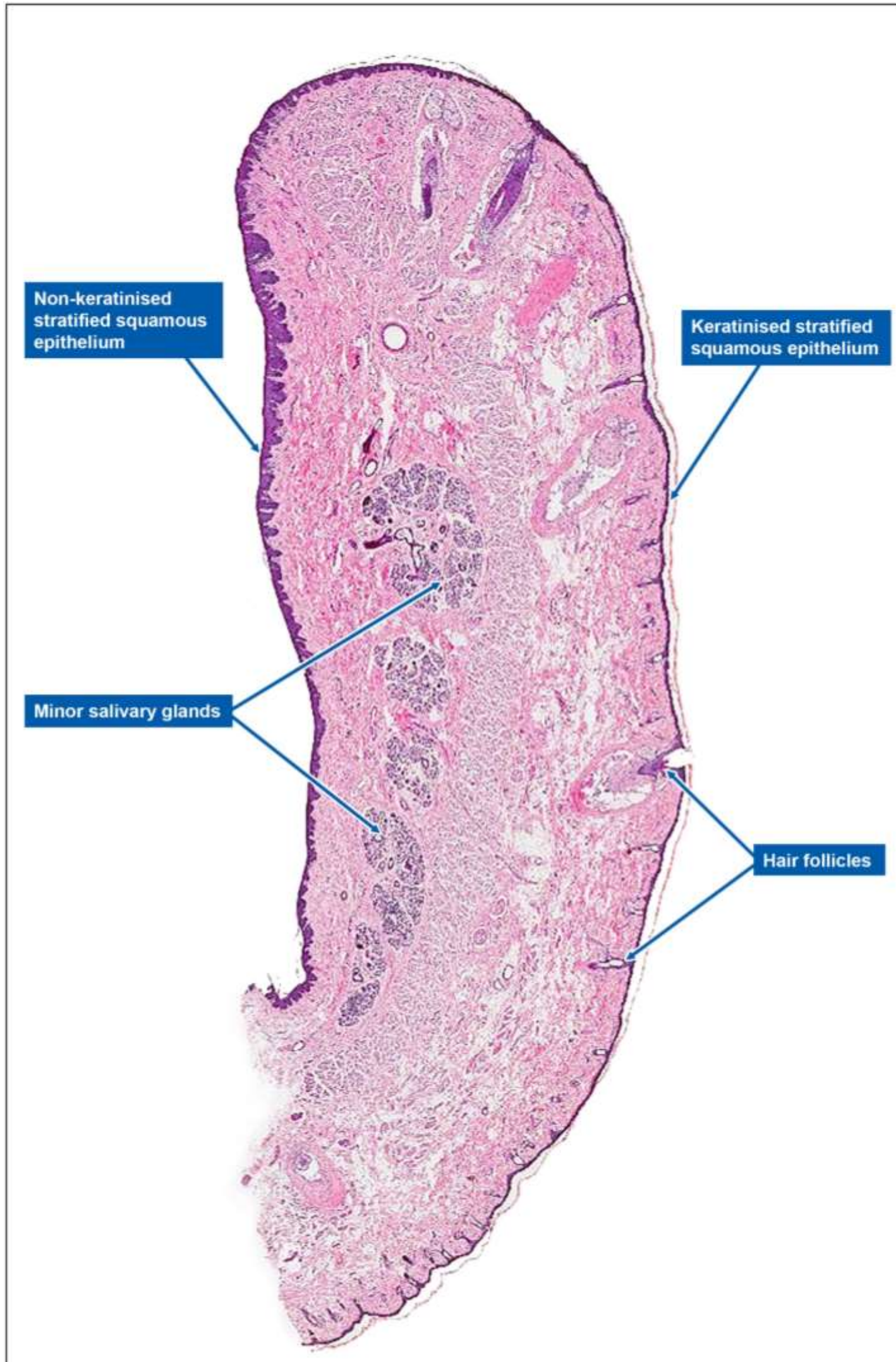
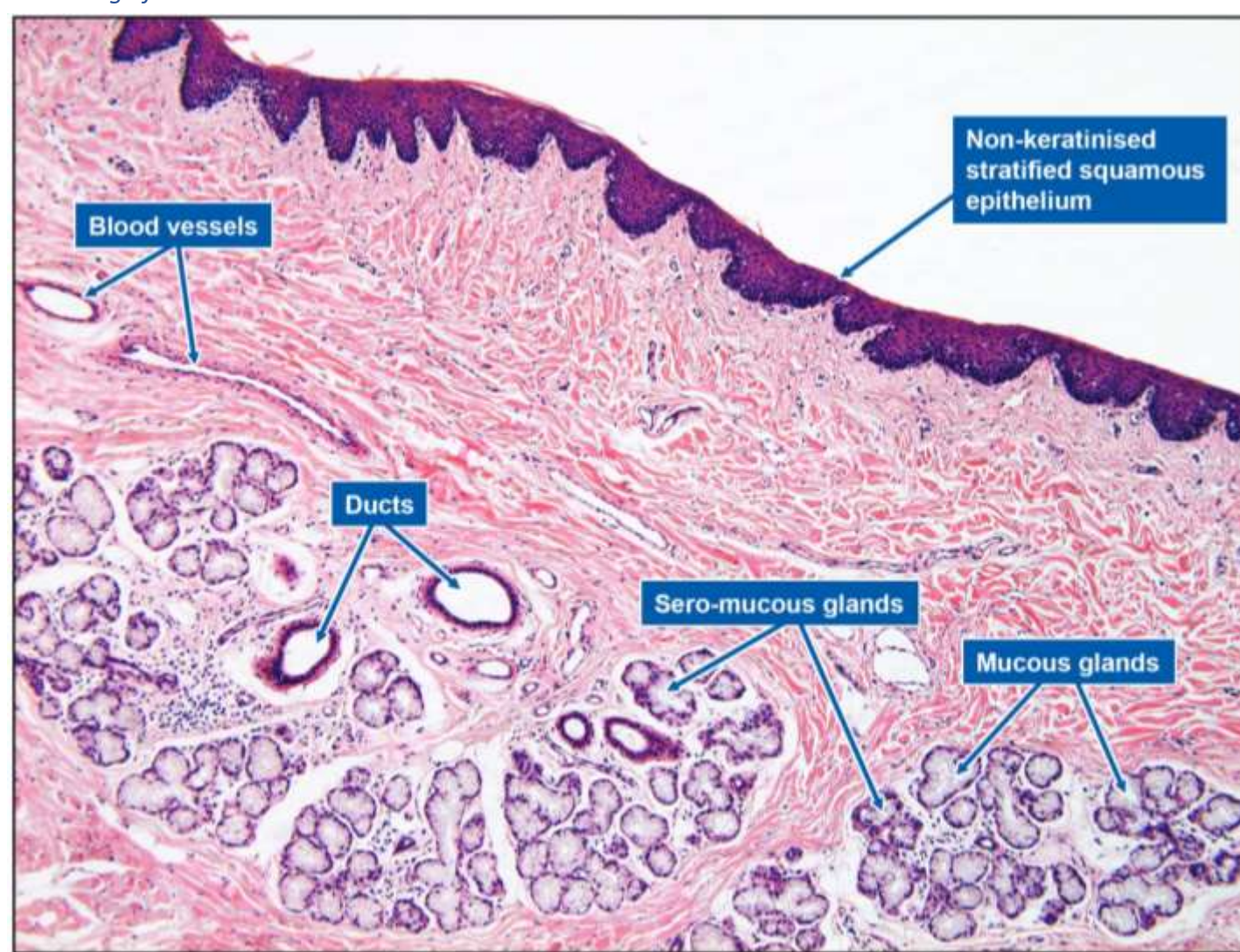


Lip Monkey, H&E

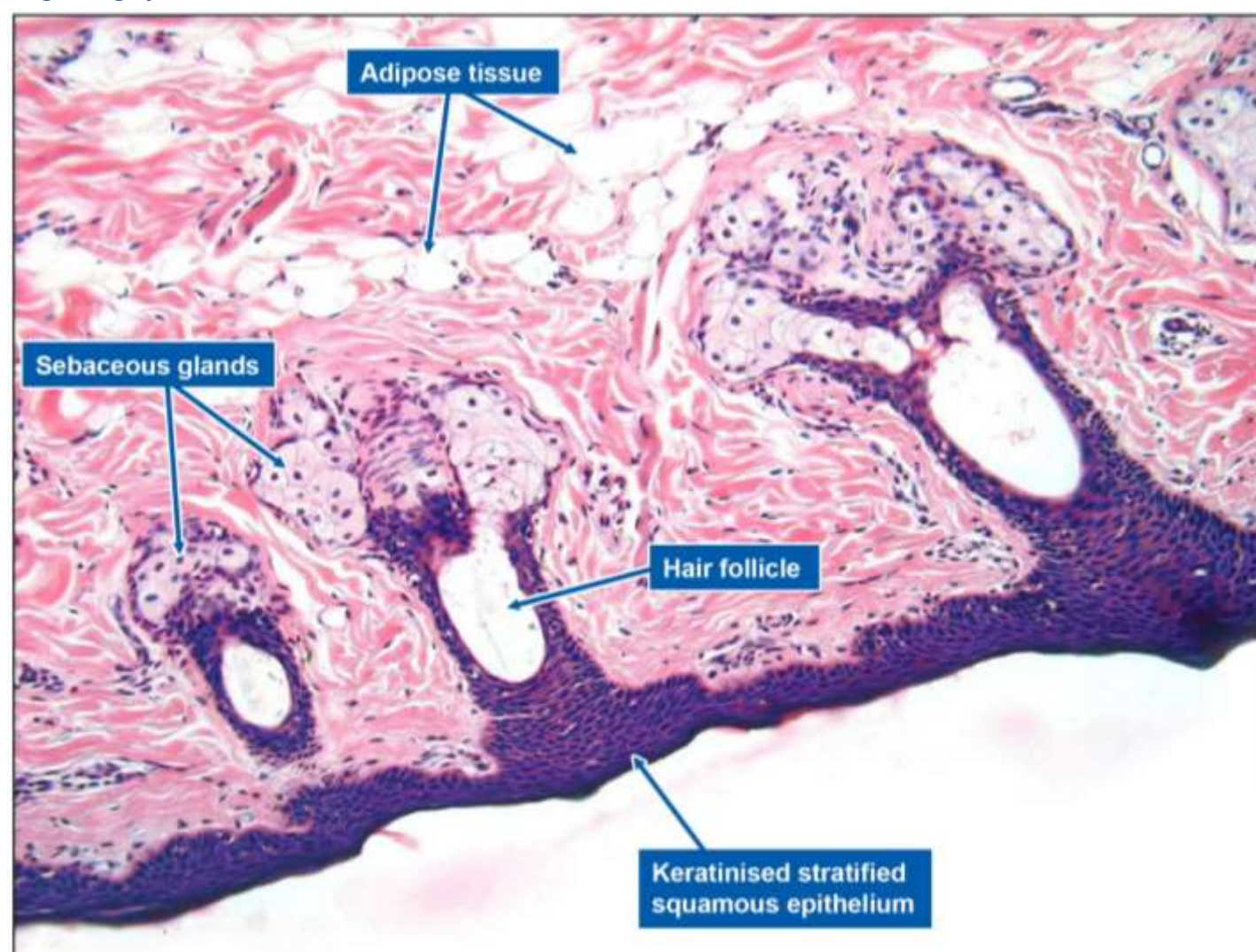
Digestive System 1



Low magnification



High magnification



High magnification

- The outer surface consists of features of the skin (Keratinized stratified squamous epithelium). It has the epidermal/dermal layers, sweat glands and hair follicles with sebaceous glands.
- The middle is the vermillion zone – There are no sweat or salivary glands. Rich blood supply gives the red colour to this zone. This part is rich in sensory innervation and so is highly sensitive.
- The mucosal surface is lined by thick stratified squamous epithelium. There are accessory salivary glands in the submucosal layer along with serous, mucous and mixed type of sero-mucous glands.