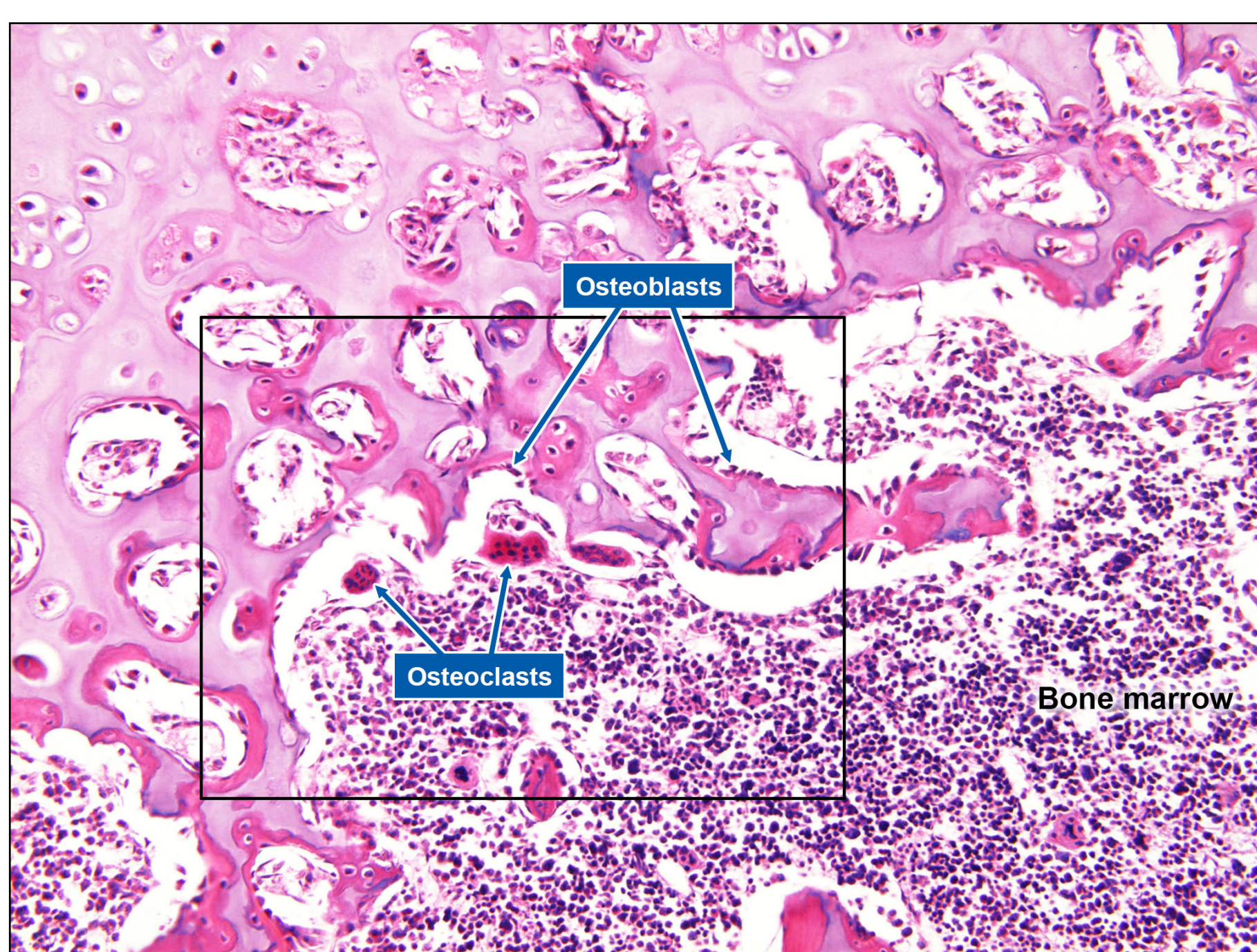
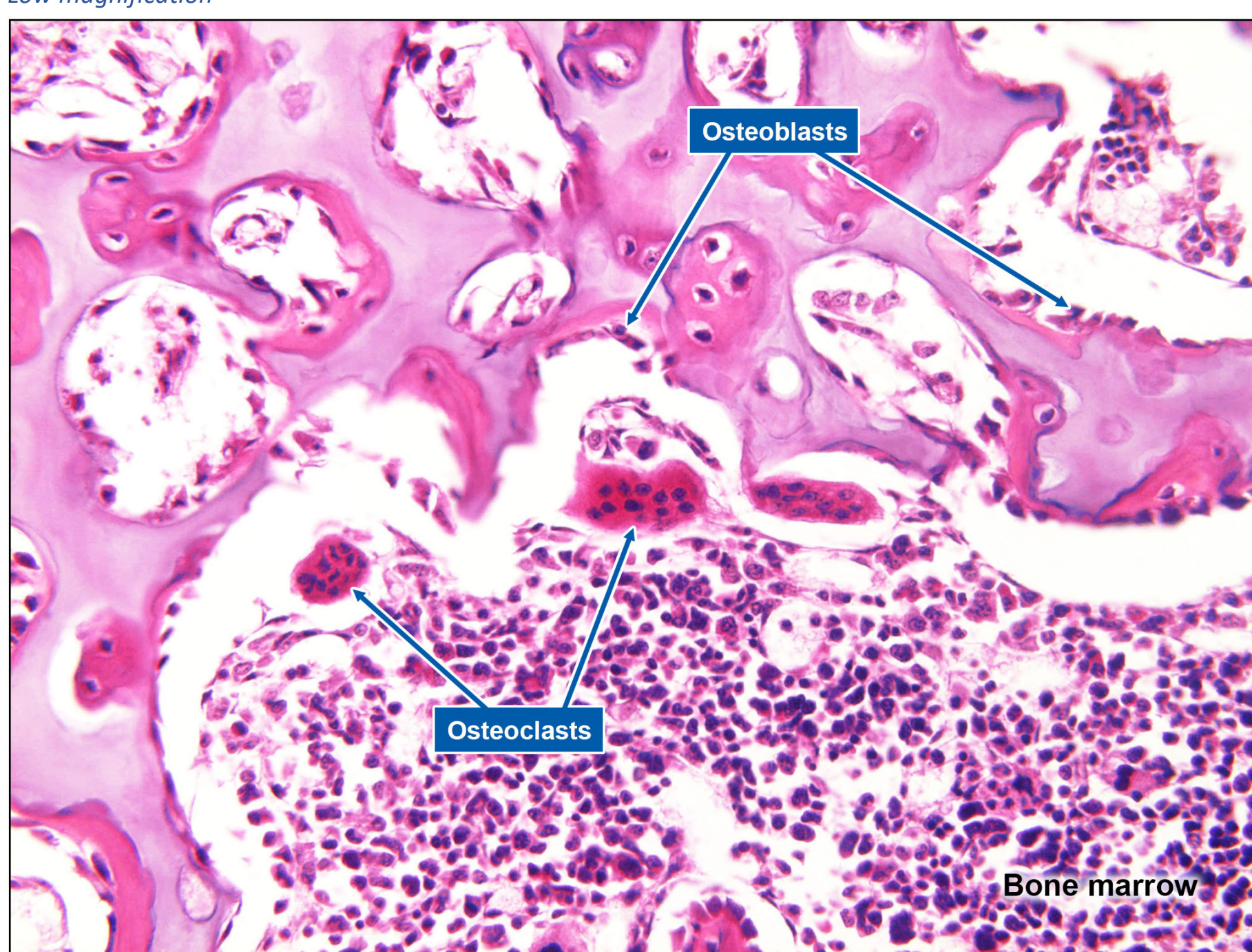


# SPINAL COLUMN

## Musculoskeletal System



Low magnification



High magnification

1. The cross section of the spinal column depicts the osteoblasts and osteoclasts. These cells are responsible for bone homeostasis.
2. Osteoblasts are cells responsible for synthesizing the bone matrix and coordinating skeleton mineralization.
3. They synthesize the osteoid proteins and help deposit it.
4. Osteoid undergoes calcification, trapping the osteoblasts which eventually become osteocytes.
5. Osteoclasts are large multinucleated cells. They are large dome shaped cells.
6. They dissolve and absorb bone.