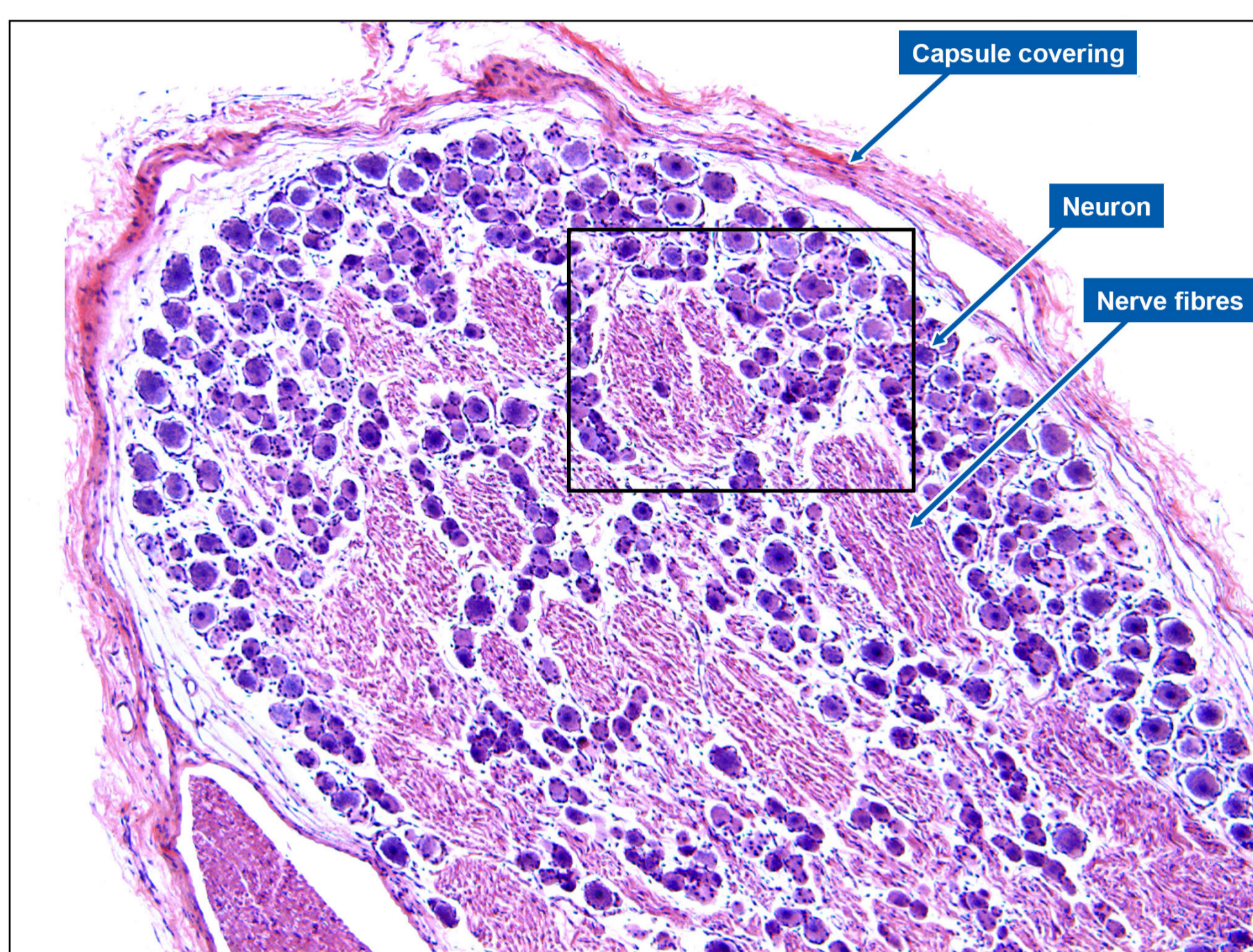


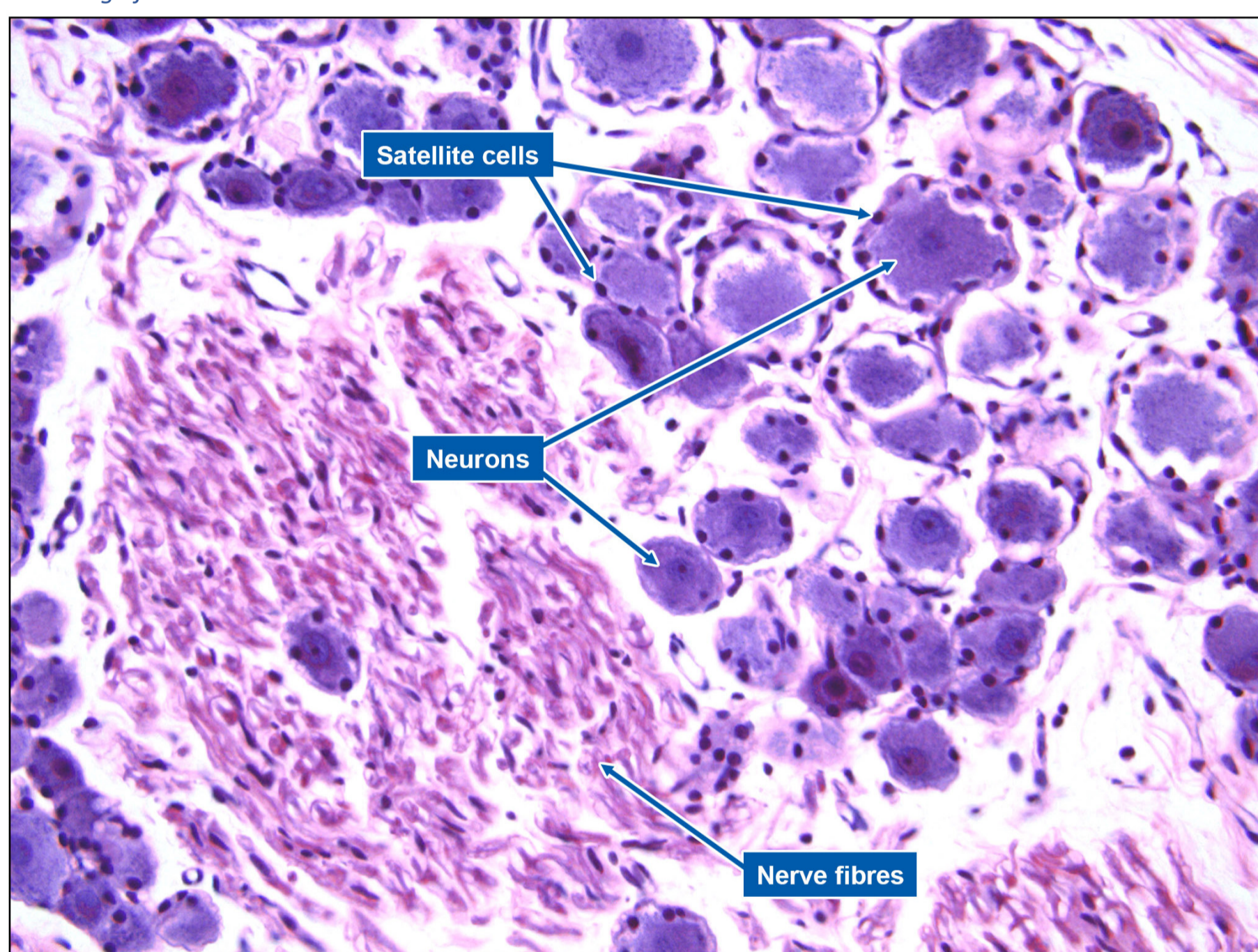
PITUITARY GLAND (PARS NERVOSA)

Endocrine System

Posterior pituitary: Pars Nervosa is also known as the neurohypophysis. Consists of the median eminence, infundibular stalk, and infundibular process.



Low magnification



High magnification

- Posterior pituitary is largely made up of unmyelinated axons from hypothalamic neurosecretory neurons. These neurons secrete oxytocin and antidiuretic hormone (ADH).
- The axon runs from supraoptic and paraventricular hypothalamic nuclei and have swellings called neurosecretory bodies.
- Neurosecretory bodies are also known as Herring bodies, which store and release oxytocin or vasopressin upon neural stimulation.
- Pars nervosa also contains pituicytes which are glial cells.
- Diabetes Insipidus: Body produces dilute urine leading to polyuria. Result of ADH deficiency.