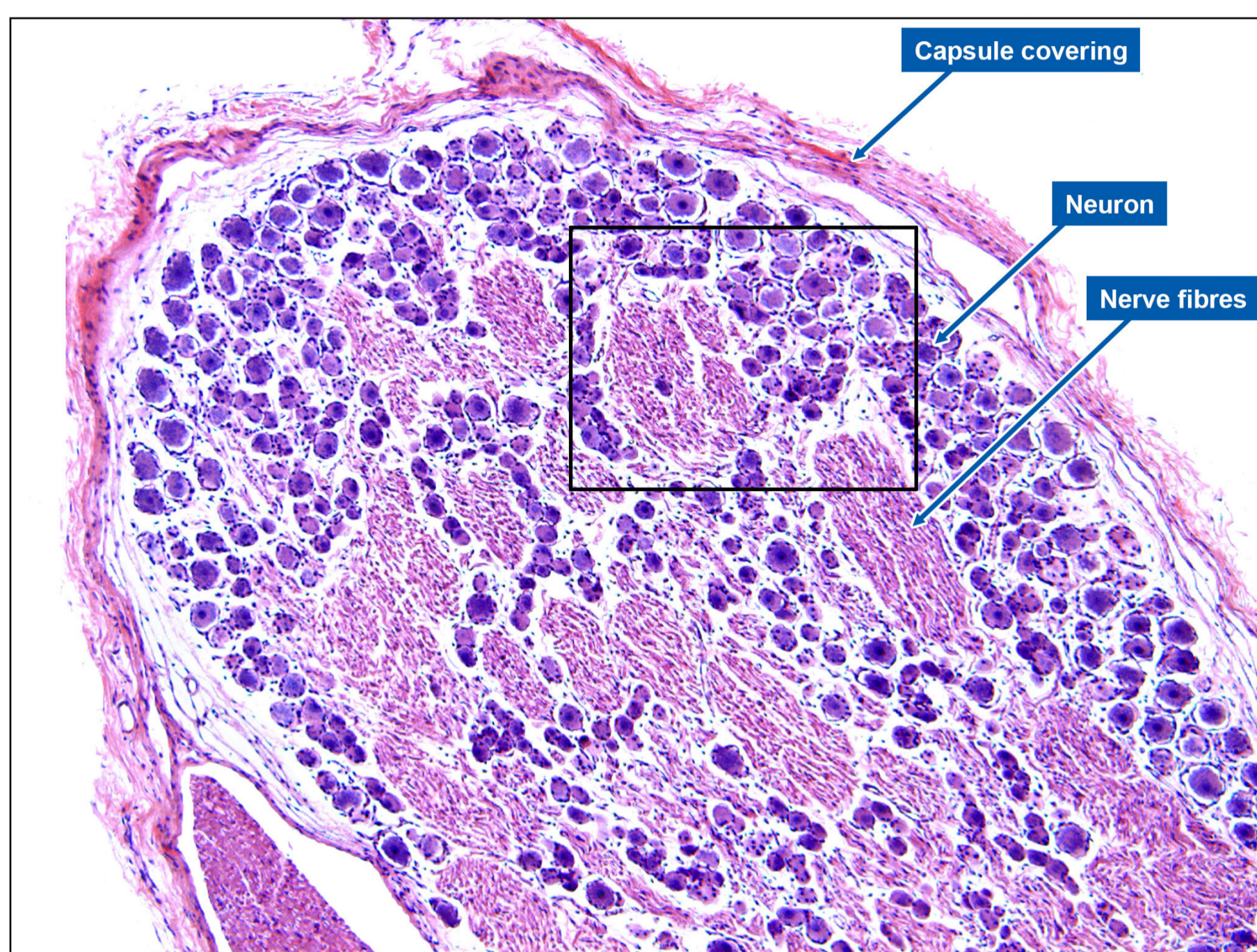


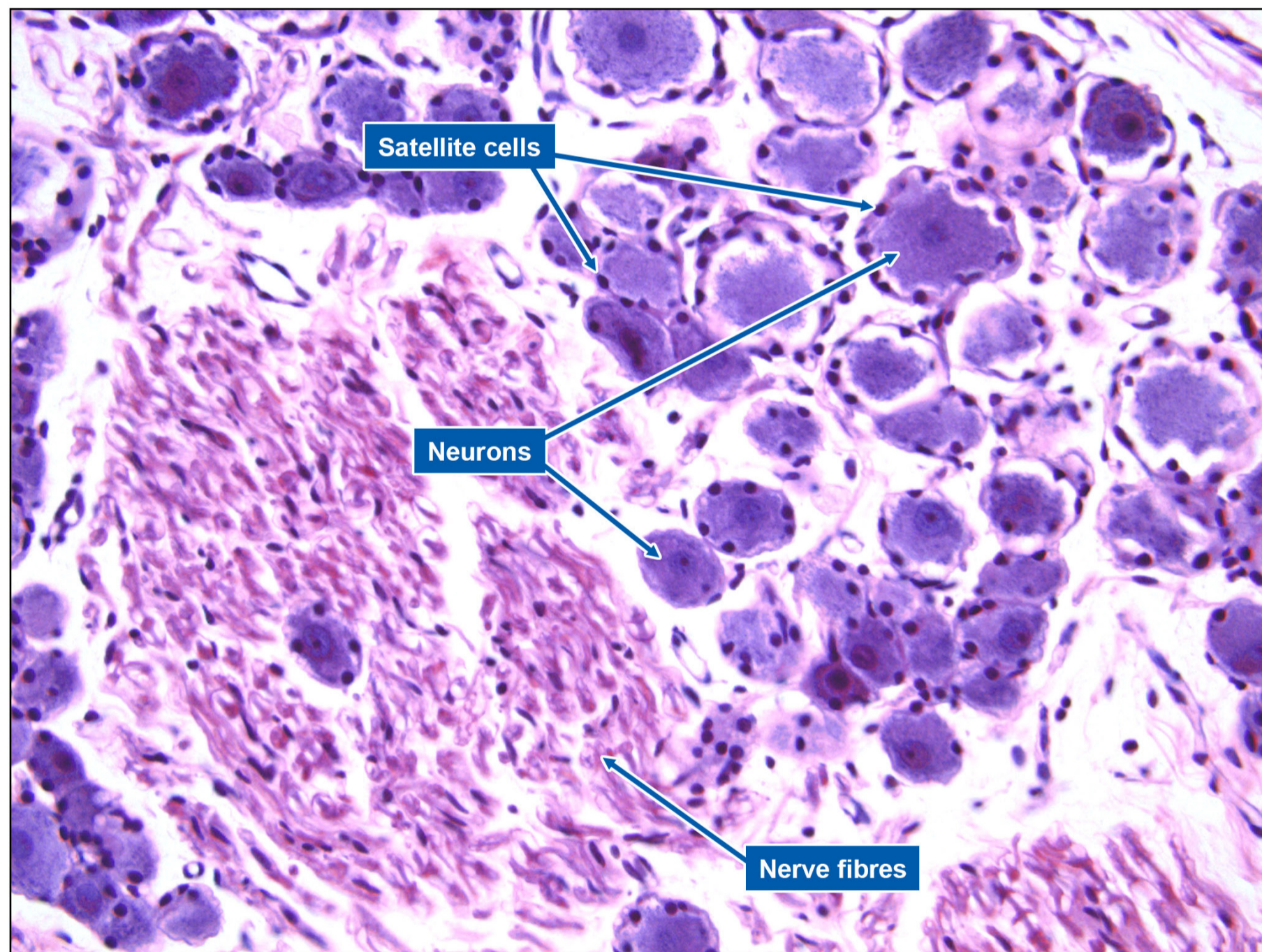
SENSORY GANGLION

Nervous System

Sensory ganglion is a collection of nerve cell bodies in the peripheral nervous system that carry afferent impulse to the CNS. They are covered by a connective tissue capsule. The ganglia contain pseudo-unipolar neurons, relaying information from ganglion nerve ends to grey matter of the spinal cord.



Low magnification



High magnification

- A ganglion is a swelling that develops along the path of nerve.
- Satellite cells: tiny, flattened cells located in the peripheral nervous system ganglia, mostly in the dorsal root ganglia. They are also present in autonomic ganglia. Their function is to aid in regulation and stability of the environment around the ganglion cell bodies.