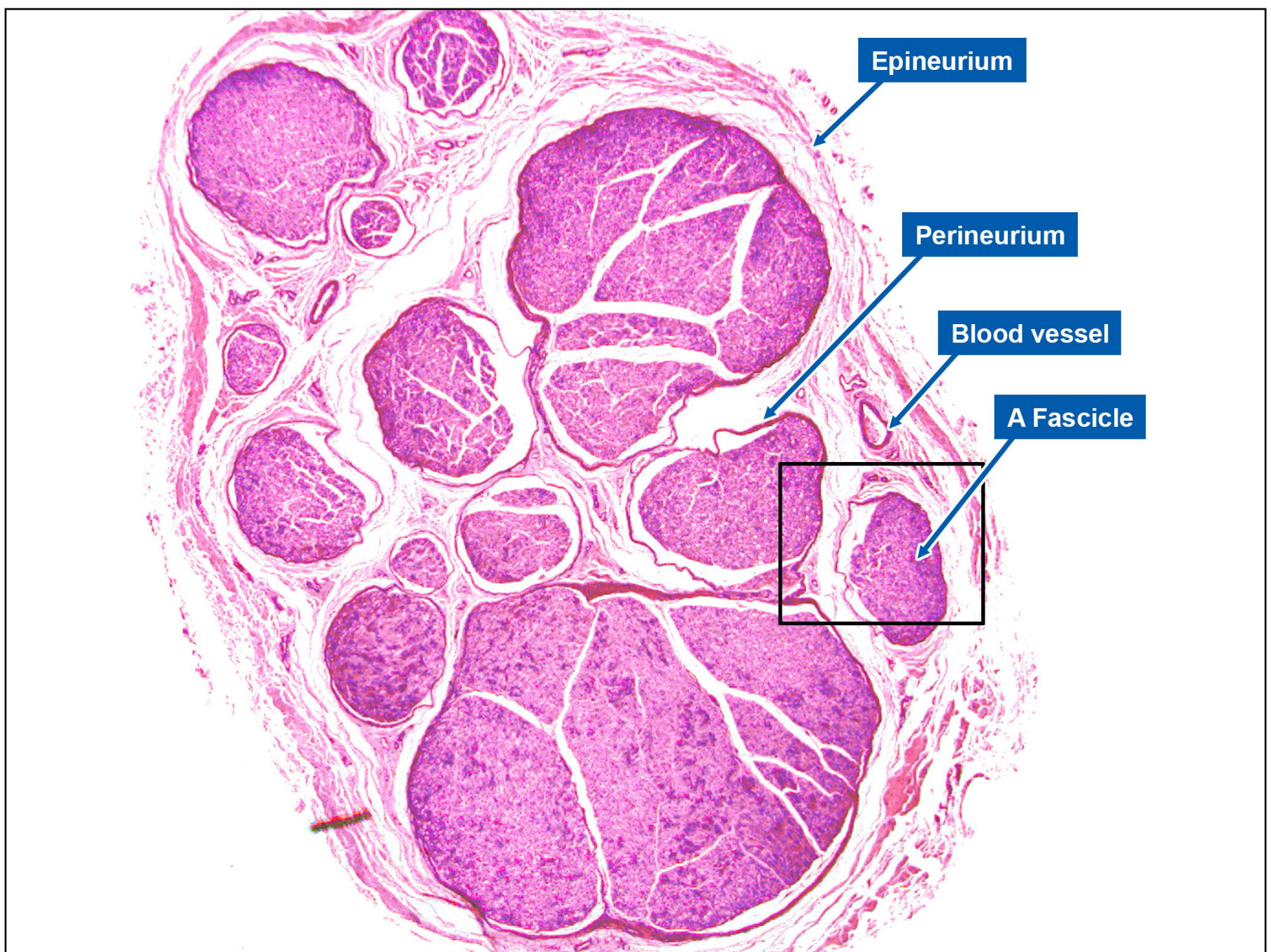


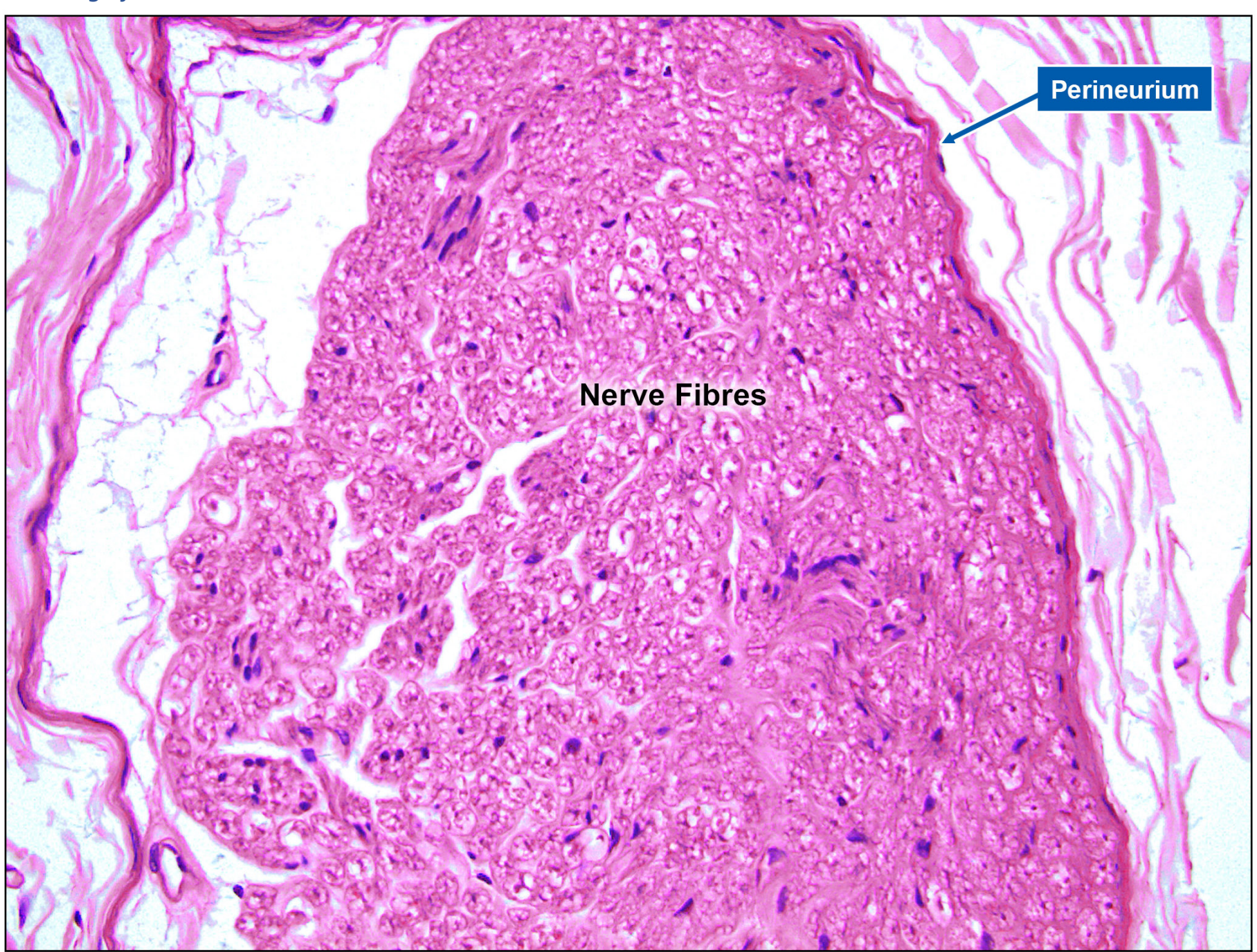
## MEDIAN NERVE

### Nervous System

Median nerve is a mixed nerve (sensory and motor).



Low magnification



High magnification

- Inside nerves are groups of neurons organized into bundles known as fascicles. The fascicles that innervate the forearm muscles are mainly found on the dorsal side of the median nerve.
- Perineurium: A connective tissue sheath that surrounds each fascicle. It consists of concentric layers of flattened cells alternated by longitudinally oriented collagen fibres analogous to the epineurium. The number of layers varies with the size of the fascicle.
- Injury to the perineurium or epineurium of a peripheral nerve (median nerve) may lead to muscle atrophy. Perineurium has the capacity to heal during neuronal injury.
- Epineurium: outermost sheath made of thick connective tissues. It binds the nerve fascicles. In subcutaneous tissue, epineurium combines with adipose tissue around the peripheral nerve. The thickness of the epineurium varies between nerves and sites within the same nerve, with it being thicker near the joints.
- Inside fascicles are neurons and blood vessels held in place by a loose connective tissue known as endoneurium. The blood vessels in the fascicles delivers nutrients to the neuron.