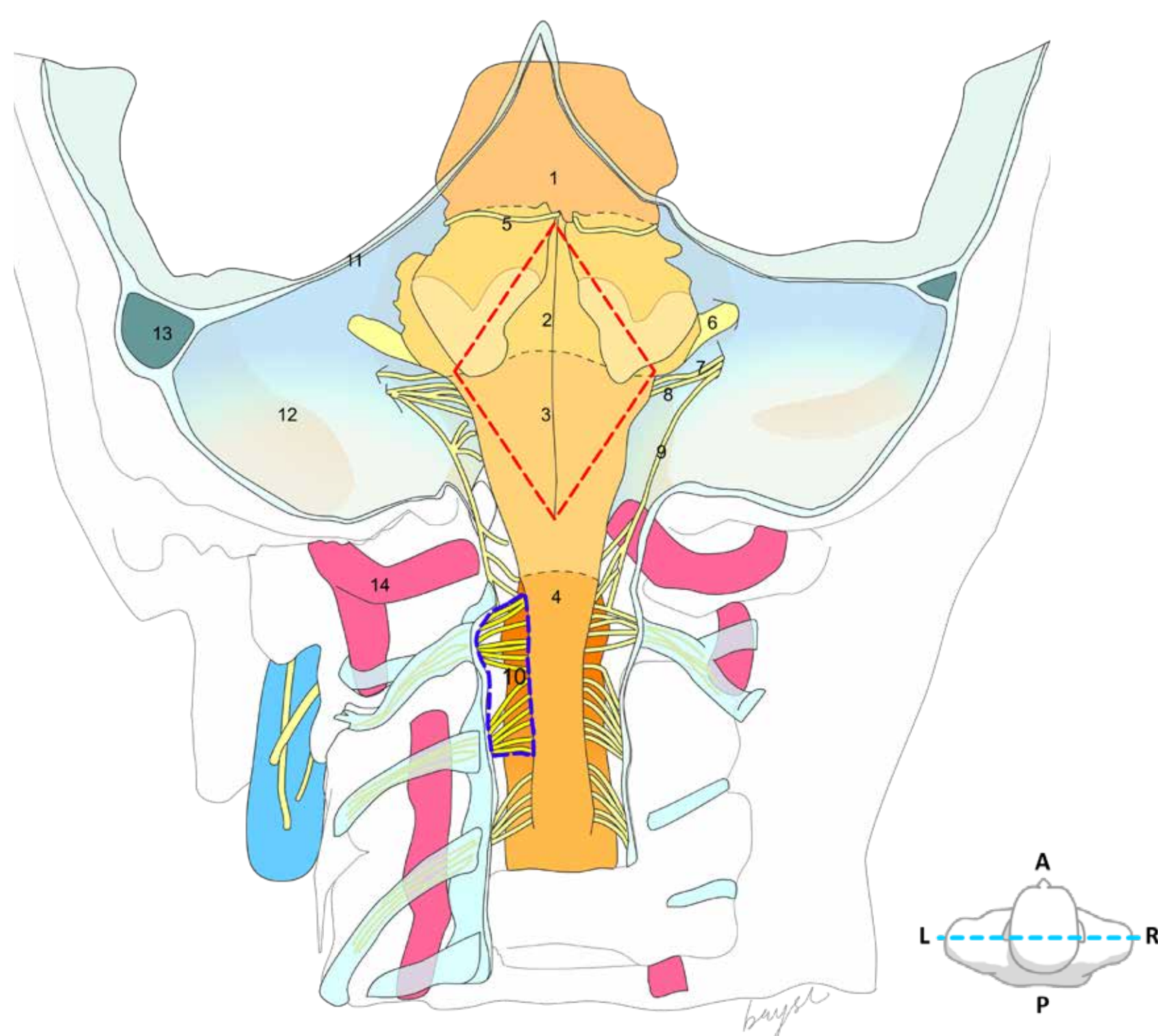


BRAINSTEM & UPPER SPINAL CORD (HEAD & NECK)



Posterior aspect or dorsal view of the brainstem and the upper segment of the spinal cord

- | | | |
|-----------|---|--|
| Brainstem | { | <ol style="list-style-type: none"> 1. Inferior colliculus (midbrain) 2. Pons 3. Medulla 4. Spinal cord |
| Nerves | { | <ol style="list-style-type: none"> 5. Trochlear nerve (IV) 6. Facial nerve (VII),
Vestibulocochlear nerve (VIII) 7. Glossopharyngeal nerve (IX) 8. Vagus nerve (X) 9. Spinal accessory nerve (XI) 10. Dorsal rootlets 11. Tentorium cerebelli 12. Infra tentorial compartment 13. Transverse sinus 14. Left vertebral artery |

1. The **brainstem** is made up of the **midbrain** (colliculi), **pons** and **medulla**. Note the cranial nerves IV, VII, VIII, IX, X and XI arise from the brainstem.
2. Identify the fourth ventricle (this is outlined in red)
3. The spinal cord begins at the cervical segment one immediately below the medulla. Note the **dorsal rootlets** of cervical spinal cord 1 and 2 segments. Locate the dorsal root ganglion (sensory ganglion)
4. Identify the meninges (dura mater) covering the spinal cord
5. Identify also the **vertebral artery** (left) which ascends through the foramen transversarium

*Q: Where does the vertebral artery originate and how does it terminate?
What areas of the brain does it supply?
What do the cranial nerves mentioned in 1 supply?*